

Association
for Children
of New Jersey



A City Profile of Child Well-Being

Newark
Kids Count
2002-2003



NEWARK KIDS COUNT 2002 - 2003

A City Profile of Child Well-Being

Association for Children of New Jersey

Stuart Grant

President, ACNJ Board of Trustees

Cecilia Zalkind

Executive Director

Funding for Newark Kids Count provided by

The Annie E. Casey Foundation

The Healthcare Foundation of New Jersey

The Prudential Foundation

Written by Tanya Whitney-Williams

Newark Outreach Coordinator

Contributor:

Eloisa Hernandez-Ramos, Camden Outreach Coordinator

Special Thanks To:

Millissa Hare, Student Intern

Nancy Parello, Communications Specialist

Cecilia Traini, Administrative Assistant

Association for Children of New Jersey © 2003

35 Halsey Street, Newark, NJ 07102

(973) 643-3876

For more information or to view Newark Kids Count online,
go to www.acnj.org.

The Association for Children of New Jersey would like to thank each of these individuals and agencies for their help and cooperation on this project:

Megan Ambrosio, Newark Police Department

Michelle J. Baldwin, Newark Public Schools

Suzanne Borys, NJ Department of Human Services

Deborah Chapman, Internal Revenue Service

City of Newark, Office of the City Clerk

County of Essex, Board of Elections & County Clerk

Anthony DeBarros, Newark Department of Water and Sewer

Linda Dimasi, NJ Department of Health and Senior Services

Jay Duco, NJ Department of Health and Senior Services

Patrick Dwyer, NJ Department of Health and Senior Services

Betty Goldfond, Greater Newark Conservancy

Darrin Goldman, NJ Department of Health and Senior Services

Michelle Iadama, NJ Department of Human Services

Cathy Joseph, NJ Department of Human Services

Kathi Krablin, Kids Corporation II

Geoffrey C.S. Marsh, NJ Department of the Treasury

Richard Mullen, NJ Department of Health and Senior Services

Claudia Ocello, New Jersey Historical Society

Dr. Ernest Reock, Jr., Rutgers University - Bloustein School

Nancy Rivera, Newark Public Schools

Rose Smith, Children's Hospital of New Jersey

Joe Sweatlock, NJ Department of Health and Senior Services

Donna Taaffe, Programs for Parents, Inc.

Sharon Tobin, Meeting Emergency Needs With Dignity

Joseph Versace, NJ Department of Human Services

**ACNJ would like to acknowledge our local partners for their support of
Newark Kids Count 2002 - 2003:**

Ad House, Inc.
The Apostles' House
Babyland Family Services, Inc.
Bessie Green Community, Inc.
Big Brothers Big Sisters of Greater Newark & Essex
Communities In Schools of Newark
Communities In Schools of New Jersey
Community Agencies Corporation of NJ
Community Partners for Youth
Covenant House New Jersey
Episcopal Community Development
Family Life Institute of Planned Parenthood of Metro. NJ
Family Service Bureau of Newark
Friendly Fuld Neighborhood Centers, Inc.
Gateway Maternal and Child Health Consortium
Greater Newark Conservancy
Healthy Mothers/Healthy Babies of Essex
Hispanic Development Corporation
International Youth Organization
Kids Corporation

La Casa de Don Pedro
New Community Corporation
New Jersey Community Loan Fund
New Jersey Historical Society
Newark Day Center
Newark Do Something
Newark Emergency Services for Families
Newark Literacy Campaign
Newark Preschool Council, Inc.
Newark YMWCA
Protestant Community Centers, Inc.
St. Columba Neighborhood Club, Inc.
The Heldrich Center for Workforce Development
The Leaguers, Inc.
The Ready Foundation
Unified Vailsburg Services Organization
United Way of Essex and West Hudson
Urban League of Essex County
Women's Urban Renewal Development Corporation
Youth Consultation Service

TABLE OF CONTENTS

<u>SECTION 1: INTRODUCTION</u>	<u>4</u>
<u>SECTION 2: DATA HIGHLIGHTS</u>	<u>5</u>
<u>SECTION 3: DEMOGRAPHICS</u>	<u>7</u>
Population	
Self-Sufficiency Standard	
Household/Family Earnings	
EITC	
<u>SECTION 4: FAMILY WELL- BEING</u>	<u>16</u>
Welfare/Food Stamps	
WIC	
Child Care	
Child Abuse	
<u>SECTION 5: CHILD HEALTH</u>	<u>20</u>
Births - Low Birth Weight, Prenatal Care, Teen Births	
Deaths - Infant Mortality, Child Deaths, Teen Deaths	
Asthma	
HIV/AIDS	
STDs	
Vaccinations	
<u>SECTION 6: MENTAL HEALTH</u>	<u>30</u>
Primary Presenting Problems	
<u>SECTION 7: ENVIRONMENTAL HEALTH</u>	<u>32</u>
Lead	
Toxic Waste Sites	
<u>SECTION 8: EDUCATION</u>	<u>36</u>
Enrollment	
Suspensions	
Test Scores - ESPA, GEPA, HSPT, SAT	
Graduation Rate	
<u>SECTION 9: JUVENILE JUSTICE</u>	<u>42</u>
Juvenile Arrests	
Total Arrests	
<u>GLOSSARY/SOURCES</u>	<u>43</u>

INTRODUCTION

The Association for Children of New Jersey (ACNJ) is pleased to present Newark Kids Count 2002 - 2003, the sixth annual snapshot of child well-being in Newark, New Jersey. With generous support from The Prudential Foundation, The Healthcare Foundation of New Jersey and the Annie E. Casey Foundation, ACNJ produces Newark Kids Count to provide an annual snapshot of child well-being in New Jersey's largest city. Newark Kids Count 2002 incorporates the most current statistics available to highlight the many complex and interrelated problems Newark's children face every day.

Newark Kids Count 2002 - 2003 is a resource tool for policymakers, citizens, social service providers, educators, organizations and advocates so decisions are based on data, not speculation, increasing the chance that public policy will actually help Newark's children. This data report also tracks changes and trends over time, offering important long-term perspectives to help guide public policy.

As ACNJ reflects on six years of publishing Newark Kids Count, there is evidence that improvements have been made for children in some indicator areas. However, the data shows that too many children continue to struggle with serious unmet health, educational and economic needs. Until Newark Kids Count can depict outcomes for Newark's children that equal and surpass those of children in other communities, our commitment to improving child well-being must remain strong.

ACNJ welcomes comments and suggestions about Newark Kids Count so that we can best meet the informational needs of the community. We are committed to the Newark Kids Count initiative and thank all individuals and organizations that have embraced the report over the last five years. Newark's children unconditionally deserve our greatest efforts to show them that all Kids Count.



In Newark...

1 of every 3 children live in poverty, at risk of hunger and chronic illness.

Each week, 12 children are born with low birth weight.

Each month, more than 22 babies are born without having received prenatal care.

Each month, 118 Newark children under age 19 contract a sexually transmitted disease.

Each month, more than 70 babies are born to girls under age 19.

Each month, more than 61 children are admitted to the hospital with asthma related illness.

Each day, we must strive to ensure that all Newark Kids Count.

Snapshot Of Newark's Kids

Newark Children Struggle With Poverty, Illness and Abuse

Newark's children are less likely to receive immunizations, more likely to fail in school and more likely to suffer from health problems than children living in other parts of New Jersey.

They are also more likely to die.

The horrific child abuse case that surfaced in Newark in January 2003, leaving one boy dead and his two brothers nearly starved to death, exposed widespread systemic problems in the state's child protection system. Statistics in this report suggest these problems are even worse in Newark.

While child deaths dropped statewide, Newark saw a 16 percent increase in the number of children, ages 1 to 14, who died from 1995 to 1999. Nearly 13 percent of children who died in New Jersey in 1999 lived in Newark. The city claims just 4 percent of the state's overall child population.

The number of child abuse cases that state Division of Youth and Family Services workers in Newark "substantiated" or proved plummeted 40 percent. Statewide, substantiations dropped about 17 percent. This suggests investigations, especially in Newark, are inadequate, preventing caseworkers from identifying abusive families and keeping children safe.

Abuse is not the only danger facing Newark's children. These children are, in general, less healthy than kids in other parts of the state.

Newark continues to lag behind the rest of the state and the country in immunizing its young children against disease. In 2000, just 65 percent of two-year-olds received required immunizations, compared to 77 percent statewide and 78 percent in the U.S.

The city's infant mortality rate is nearly double that of New Jersey. Far fewer Newark mothers receive the prenatal care that can help deliver healthy babies. And, Newark children suffer disproportionately from asthma.

HIV/AIDS and other sexually-transmitted diseases also plague Newark's children. The number of children living with HIV/AIDS climbed 140 percent in recent years. Other sexually-transmitted infections increased 26 percent in children under 19, suggesting a widespread need for more sexuality education and disease prevention programs.

This report also reveals troubling trends in treating children with mental health problems. The number of Newark children served in state-funded mental health programs dropped for nearly every "presenting" problem, except suicide and assaultive behavior. This suggests children are being denied the help they need before problems escalate to the point where they hurt others or themselves. It's also a desperate call for more mental health programs to treat these troubled children.

Despite years of state-control over Newark's school district and widespread education reforms, city students continue to fail at abysmal rates. Roughly three-quarters of Newark's eighth-graders failed state math and science tests, while 53 percent failed the language arts tests. That same year, just 44 percent of students graduated high school four years after they started. This school failure increases the chances that Newark's children will continue to struggle with the same poverty that plagues their families.

Poverty is at the root of many of these problems. While the city has followed statewide trends in reducing its welfare rolls and has seen a drop in families receiving Food Stamps, Newark families still rely much more heavily on public assistance than families in other areas.

There are a few bright spots. Programs aimed at reducing lead poisoning in children have resulted in an increase in the number of children tested for lead. And, the number of juvenile arrests plummeted 55 percent, outpacing the 26 percent statewide decline.

But these gains are not enough. City and state officials, child advocates and social service providers need to work together to find solutions to better help Newark's children. It is ACNJ's hope that the current crisis in the state's child protection system will prompt a deeper, more widespread examination of how agencies — private and public — can better cooperate to provide essential services that can help children, in Newark and throughout New Jersey, to grow up safe, healthy and educated.

DEMOGRAPHICS

Total Population			
	1990	2000	Change
Newark	275,221	273,546	-0.6%
Essex County	778,206	793,633	2%
New Jersey	7,730,188	8,414,350	8.9%

Child Population Under Age 18			
	1990	2000	Change
Newark	78,493	76,419	-2.6%
Essex County	188,637	206,950	9.7%
New Jersey	1,799,462	2,087,558	16%

	1990	2000
Newark's Share of Essex County's Children Under Age 18	41.6%	36.9%
Newark's Share of New Jersey's Children Under Age 18	4.4%	3.7%
Source: US Census Bureau 2000 Summary File (SF 1) 100-Percent Data and 1990 Summary Tape File (STF 1) 100-Percent Data.		

Newark Map



<u>Newark's Density</u>	
Number of people per square mile:	
2000.....	11,495
1990.....	11,564
Source: U.S. Bureau of Census, Census Data, 1990, 2000	

2000 Population by Race and Hispanic Origin for All Ages in Newark, Essex County and New Jersey

		Newark			Essex County			New Jersey		
		Hispanic	Non-Hispanic	Total	Hispanic	Non-Hispanic	Total	Hispanic	Non-Hispanic	Total
One Race	White or Caucasian	46%	54%	72,537	15%	85%	352,859	9%	91%	6,104,705
	Black or African American	3%	97%	146,250	2%	98%	327,324	4%	96%	1,141,821
	American Indian and Alaskan Native	47%	53%	1,005	40%	60%	1,861	42%	58%	19,492
	Asian	4%	96%	3,263	1%	99%	29,429	1%	99%	480,276
	Native Hawaiian and other Pacific Islander	49%	51%	135	33%	67%	417	35%	65%	3,329
	Other	95%	5%	38,430	93%	7%	54,588	96%	4%	450,972
Total One Race		29%	71%	261,620	15%	85%	766,478	13%	97%	8,200,595
Two or More Races		49%	51%	11,926	32%	68%	27,155	37%	63%	213,755
Total Population		80,622	192,924	273,546	122,347	671,286	793,633	1,117,191	7,297,159	8,414,350

Source: U.S. Census Bureau, Census 2000 Redistricting Data (P.L. 94-171) Summary File.


2000 Population by Race and Hispanic Origin for Children Under Age 18 in Newark, Essex County and New Jersey

		Newark			Essex County			New Jersey		
		Hispanic	Non-Hispanic	Total	Hispanic	Non-Hispanic	Total	Hispanic	Non-Hispanic	Total
One Race	White or Caucasian	58%	42%	15,976	20%	80%	76,290	11%	89%	1,395,142
	Black or African American	4%	96%	44,493	3%	97%	97,642	5%	95%	342,833
	American Indian and Alaskan Native	49%	51%	329	42%	58%	597	46%	54%	5,677
	Asian	5%	95%	628	1%	99%	7,362	1%	99%	124,470
	Native Hawaiian and other Pacific Islander	58%	42%	43	37%	63%	117	41%	59%	925
	Other	96%	4%	11,803	93%	7%	16,696	95%	5%	142,011
Total One Race		31%	69%	73,272	17%	83%	198,704	15%	85%	2,011,058
Two or More Races		56%	44%	3,147	35%	65%	8,246	36%	64%	76,500
Total Population		32%	68%	76,419	18%	82%	206,950	16%	84%	2,087,558

Source: U.S. Census Bureau, Census 2000 Redistricting Data (P.L. 94-171) Summary File

Newark 2000 Population by Ward							
		Central Ward	East Ward	North Ward	South Ward	West Ward	Newark Total
One Race (Not Hispanic or Latino)	White	1,746	24,920	9,245	286	2,753	38,950
	Black or African American	37,282	10,892	10,586	42,961	40,362	142,083
	American Indian and Alaskan Native	111	97	162	80	79	529
	Asian	475	362	1,149	130	1,022	3,138
	Native Hawaiian and Other Pacific Islander	13	13	21	9	13	69
	Other	114	1,132	514	84	190	2,034
	Total One Race	39,741	37,416	21,677	43,550	44,419	186,803
Two or more Races (Not Hispanic or Latino)		754	2,396	1,064	657	1,250	6,121
Hispanic or Latino		11,146	21,881	39,265	2,225	6,105	80,622
Total Population		51,641	61,693	62,006	46,432	51,774	273,546
Source: U.S. Census Bureau, Census 2000 Redistricting Data (P.L. 94-171) Summary File							

Newark 2000 Population Under Age 18 by Ward							
		Central Ward	East Ward	North Ward	South Ward	West Ward	Newark Total
One Race (Not Hispanic or Latino)	White	194	4,913	1,186	62	370	6,725
	Black or African American	11,604	2,439	2,495	13,520	12,865	42,923
	American Indian and Alaskan Native	29	27	56	31	25	168
	Asian	45	47	231	32	239	594
	Native Hawaiian and Other Pacific Islander	3	2	7	2	4	18
	Other	35	210	151	29	64	489
	Total One Race	11,910	7,638	4,126	13,676	13,567	50,917
Two or more Races (Not Hispanic or Latino)		158	412	242	188	379	1,379
Hispanic or Latino		3,801	5,111	12,313	863	2,035	24,123
Total Population		15,869	13,161	16,681	14,727	15,981	76,419
Source: U.S. Census Bureau, Census 2000 Redistricting Data (P.L. 94-171) Summary File							

Economic Indicators								
	Per Capita Income		Estimated Median Household Income		Estimated Percent of People in Poverty*		Estimated Percent of Children <18 in Poverty*	
	1989	1999	1989	1999	1989	1999	1989	1999
Newark	\$9,424	\$13,009	\$21,650	\$26,913	26.3%	28.4%	37.5%	36.9%
Essex County	\$17,574	\$24,943	\$34,518	\$44,944	14.3%	15.6%	22.2%	20.8%
New Jersey	\$18,714	\$27,006	\$40,927	\$55,146	7.6%	8.5%	11.3%	11.1%

* This is based on all persons for whom poverty status was determined, which excludes institutionalized persons, persons in military quarters and in college dormitories, and unrelated individuals under 15 years old.
Source: U.S. Census Bureau, 1990 Summary Tape File 3 (STF 3) - Sample data and Census 2000 Summary File 3 (SF 3) - Sample Data.

NEWARK RESIDENTS VOTING RECORD

Registered Voters	
Year	Number of Registered Voters
2002	125,164
2001	117,465
2000	130,460
1999	125,203
1998	128,013
Change in number of registered voters 1998-2002: -2,849	

**Number of Newark Residents who Voted in the
May 2002 Mayoral Election: 55,681
or 44.4% of Registered Voters**

**Number of Newark Residents who Voted in the
November 2001 Gubernatorial Election: 43,207
or 36.7% of Registered Voters**

**Number of Newark Residents who Voted in the
April 2002 Newark Public Schools
Advisory Board Election: 16,985
or 13.5% of Registered Voters
(a 102% increase from 2001)**

Source: Essex County Clerk; Essex County Board of Elections; City of Newark - City Clerk.
Dates used: 10/98, 12/99, 11/00, 4/01, 11/01, 4/02, 5/02

Federal Earned Income Tax Credit (EITC) Estimates									
	Newark			Essex County			New Jersey		
	1997	1998	1999	1997	1998	1999	1997	1998	1999
Number of Federal Income Tax Filers	89,456	92,815	95,139	326,119	332,313	337,632	3,795,625	3,924,125	3,896,854
Number of Federal EITC Claimants	31,558	32,204	60,708	63,300	63,360	161,651	455,475	446,071	438,459
Change in Newark Federal EITC Claimants 1997 to 1999..... 92.3%									
Change in Essex County Federal EITC Claimants 1997 to 1999..... 155.7%									
Change in New Jersey Federal EITC Claimants 1997 to 1999 -3.7%									
							1997	1998	1999
Newark's share of Essex County's Federal Income Tax Filers							27%	28%	28%
Newark's share of Essex County's Federal EITC Claimants							50%	51%	38%
Percent of Newark Federal Income Tax Filers Who Claimed the Federal EITC							35%	35%	64%
Percent of Essex County Federal Income Tax Filers Who Claimed the Federal EITC							19%	19%	48%
Percent of New Jersey Federal Income Tax Filers Who Claimed the Federal EITC							12%	11%	11%
The Federal EITC is a tax credit program for low to moderate income working families. The credit offsets and in most cases exceeds any income taxes that are owed so that the claimant receives a cash refund. In 2000, New Jersey enacted a state level version called the NJ EITC, which will provide an additional credit to all working families earning below \$20,000 per year. Source: 2000 Internal Revenue Service (IRS) Zip Code Data, February 2001 Statement of Income File for New Jersey and 2002 Internal Revenue Service									



New Jersey Earned Income Tax Credit (EITC) 2001 Tax Year	
Number of State Income Tax Filers in Newark	72,489
Number of State EITC Claimants in Newark	16,002
Amount of State EITC Claimed in Newark	\$5.85 million
Source: New Jersey Division of Taxation - 2002	

The Self Sufficiency Standard for Essex County, NJ – 2002

Monthly Costs	Adult	Adult+ Infant	Adult+ Pre-schooler	Adult+ Infant+ Pre-schooler	Adult+ School-age Child+ Teenager	Adult+ Infant+ Preschooler+ School-age Child	2 Adults+ Infant+ Preschooler	2 Adults+ Pre-schooler+ School-age Child
Housing	\$758	\$913	\$913	\$913	\$913	\$1150	\$913	\$913
Child Care	0	521	651	1172	298	1470	1172	949
Food	176	257	266	345	461	464	496	544
Transportation	54	54	54	54	54	54	108	108
Health Care	81	177	163	190	193	203	224	210
Miscellaneous	107	192	205	267	192	334	291	272
Taxes	251	444	490	638	337	813	659	590
Federal Earned Income Tax Credit (-)	0	0	0	0	-122	0	0	0
Child Care Tax Credit (-)	0	-40	-40	-80	-42	-80	-80	-80
Child Tax Credit (-)	0	-50	-50	-100	-100	-150	-100	-100
Hourly Self-Sufficiency Wage	\$8.11	\$14.02	\$15.07	\$19.31	\$12.41	\$24.19	\$10.46 (Per Adult)	\$9.68 (Per adult)
Monthly Self-Sufficiency Wage	\$1,427	\$2,468	\$2,652	\$3,399	\$2,184	\$4,258	\$3,682	\$3,407
Annual Self-Sufficiency Wage	\$17,126	\$29,617	\$31,827	\$40,787	\$26,209	\$51,096	\$44,185	\$40,890

Note: The Self-Sufficiency Standard measures how much income is needed for a family of a given composition in a given place to adequately meet its basic needs– without public or private assistance.
Source: The Real Cost of Living in 2002: The Self-Sufficiency Standard for New Jersey and Legal Services of New Jersey Poverty Research Institute.



The Self-Sufficiency Standard for Essex County Compared to Major Cities, 2002*

City	Single Adult	City	Single Adult, Preschooler	City	Single Adult, Preschooler, Schoolage	City	Two Adults, Preschooler, Schoolage**
Seattle***	\$6.77	Indianapolis	\$11.96	Las Vegas	\$15.78	Indianapolis	\$9.00
Indianapolis	\$7.01	Oklahoma City	\$13.46	Oklahoma City	\$16.66	Las Vegas	\$9.48
Milwaukee	\$7.33	Las Vegas	\$13.78	Louisville	\$17.15	Seattle***	\$9.54
Oklahoma City	\$7.52	Seattle***	\$14.12	Baltimore	\$17.45	Essex County (Newark)***	\$9.68
Denver	\$7.97	Baltimore	\$14.50	Seattle***	\$17.47	Oklahoma City	\$9.99
Louisville	\$8.03	Denver	\$14.73	Essex County (Newark)***	\$17.77	Louisville	\$10.21
Essex County (Newark)***	\$8.11	Louisville	\$14.19	Denver	\$18.86	Baltimore	\$10.59
Boston***	\$8.30	Essex County (Newark)***	\$15.07	Indianapolis	\$19.75	Denver	\$10.70
Las Vegas	\$8.68	Milwaukee	\$16.33	Boston***	\$20.46	Boston***	\$11.12
Washington, DC***	\$8.68	Boston***	\$16.86	Milwaukee	\$21.22	Milwaukee	\$11.83
Baltimore	\$9.15	Washington, DC***	\$17.45	Washington, DC***	\$24.65	San Francisco***	\$13.22
San Francisco***	\$10.97	San Francisco***	\$21.15	San Francisco***	\$25.06	Washington, DC***	\$13.56

The Self-Sufficiency Standard has been completed for 24 states and cities. The cost of meeting basic needs for a given family type in different states can be directly compared. The overall Consumer Price Index (CPI) has been used to make the Standards comparable.

Essex County (including Newark) was compared to eleven large American cities, as shown above, and while Essex County is not the most expensive area to live in, it is also not the least expensive. Single persons and families with children require substantial resources to meet basic needs at an adequate level.

The Self-Sufficiency Standard Wages for Essex County, unlike most of the cities in the table, reflect an average of costs across the whole county, both urban and suburban areas.

*All wages are updated to 2002 using the Consumer Price Index

**Wages shown are per adult

***Wage calculated assuming family uses public transportation

Source: The Real Cost of Living in 2002: The Self-Sufficiency Standard for New Jersey and Legal Services of New Jersey Poverty Research Institute.

FAMILY WELL-BEING

Number of Residents Served by WIC						
	1998	1999	2000	2001	2002	Change 1998-2002
Newark	13,791	16,773	12,483	12,504*	12,127	-12%
Essex County	25,056	29,740	21,960	21,971*	22,209	-18%
New Jersey	148,403	173,420	140,150	145,695	149,914	2%
			2000	2001	2002	
Newark's Share of Essex County WIC Clients			56.8%	56.9%	54.6%	
Newark's Share of New Jersey WIC Clients			8.9%	8.6%	8.1%	
WIC Estimated Eligibles for Newark			23,511	22,587	21,777	
Percent of Estimated Eligibles Served in Newark			53.1%	55.4%	55.7%	
<p>WIC (Women, Infants and Children) is a special supplemental food program for women, infants and children. The program provides coupons for nutritious foods as well as nutrition screening and education to pregnant women, new mothers, infants, and children under five who are low income and at medical or nutritional risk.</p> <p>Source: NJ Department of Health and Senior Services</p> <p>* Estimated.</p>						

People Served by Newark Food Pantries			
Year	Children	Adults	Total
2001	15,663	13,973	29,636
2000	15,657	15,613	31,270
1999	18,209	15,224	33,433
1998	20,642	16,257	36,899
1997	19,079	15,219	34,298
Change 1997-2001	-17.9%	-30.8%	-27.3%
In 2001, 53.3% of people served in Newark Food Pantries were children.			
<p>Notes: See Glossary</p> <p>Source: Meeting Emergency Needs with Dignity (MEND) Network, Newark, NJ</p>			

Average Number of Children Receiving Temporary Assistance to Needy Families (TANF)							
	1998	1999	2000	2001	2002	Change 1998-2002	Change 2000-2002
Newark	25,305	21,392	18,648	14,792	12,410	-51%	-34%
Essex County	37,089	31,025	27,290	21,704	18,296	-51%	-33%
New Jersey	131,633	101,168	84,612	70,571	64,889	-51%	-23%
						1998	2002
Newark's Share of Essex County Children Receiving TANF						68%	68%
Newark's Share of New Jersey Children Receiving TANF						19%	19%
Source: NJ Department of Human Services, Division of Family Development							

Average Number of Children Receiving Food Stamps							
	1998	1999	2000	2001	2002	Change 1998-2002	Change 2000-2002
Newark	36,856	32,446	28,368	24,732	23,067	-37.4%	-18.7%
Essex County	54,280	47,275	41,470	36,401	34,562	-36.3%	-16.7%
New Jersey	202,021	175,767	154,026	147,677	150,643	-25.4%	-2.2%
						1998	2002
Newark's Share of Essex County Children Receiving Food Stamps						68%	67%
Newark's Share of New Jersey Children Receiving Food Stamps						18%	15%
Source: NJ Department of Human Services, Division of Family Development							

Early Care & Education

Number of licensed child care centers in Newark

August 2002.....	213
April 2001.....	180
January 2000.....	184
October 1997.....	160
Change 1997-2002.....	33.1%

Total capacity for licensed child care centers in Newark

August 2002.....	13,899
April 2001.....	12,487
January 2000.....	12,551
October 1997.....	10,093
Change 1997-2002.....	37.7%

Number of registered family child care providers in Newark

August 2002.....	346
May 2001.....	235
January 2000.....	272
Change 2000-2002.....	27.2%

Number of children cared for in family child care providers in Newark

August 2002.....	1,211
May 2001.....	823
January 2000.....	952
Change 2000-2002.....	27.2%

Number of centers contracted to provide "Abbott" court-ordered preschool in Newark

2001-2002 School Year.....	53
2000-2001 School Year.....	63



Number of Newark children in "Abbott" court-ordered preschool 2001-2002

In-district.....	619
Community Provider/Head Start.....	4,060
Total.....	4,679

Notes: See Glossary

Source: Division of Youth and Family Services, NJ Department of Human Services; Programs for Parents, Inc.; Newark Public Schools Office of Early Childhood

Substantiated Child Abuse Cases							
	1996	1997	1998	1999	2000	Change 1996-2000	
Newark	1,624	1,590	1,443	1,176	978	-39.7%	
Essex County	2,443	2,291	2,178	1,706	1,392	-43.0%	
New Jersey	10,537	11,065	9,851	9,222	8,690	-17.3%	
					1996	1999	2000
Newark's Share of Essex County Substantiated Child Abuse Cases					66.5%	68.9%	70.2%
Newark's Share of New Jersey Substantiated Child Abuse Cases					15.4%	12.8%	11.2%
Source: Division of Youth and Family Services, NJ Department of Human Services							

Out-of-Home Placements							
	1996	1998	1999	2000	2001	Change 1996-2001	
Newark	1,369	1,457	1,473	1,453	1,481	8.2%	
Essex County	1,667	2,015	2,056	2,063	2,133	27.9%	
New Jersey	8,275	9,045	9,398	9,650	10,586	27.9%	
					1996	2000	2001
Newark's Share of Essex County Out-of-Home Placements					82.1%	70.4%	69.4%
Newark's Share of New Jersey Out-of-Home Placements					16.5%	15.1%	13.9%
Source: Division of Youth and Family Services, NJ Department of Human Services							

CHILD HEALTH

		1995	1996	1997	1998	1999	Change 1995-1999
Newark	Total Number of Births	5,293	5,086	5,102	4,748	4,806	-9.2%
	Percent Low Birth Weight	13.1%	12.5%	13.2%	13.2%	13.5%	*
	Percent Receiving No Prenatal Care	7.8%	8.3%	8.1%	6.0%	5.5%	*
Essex County	Total Number of Births	12,647	12,486	12,303	12,083	12,246	-3.2%
	Percent Low Birth Weight	10.4%	11.0%	11.2%	11.6%	11.6%	*
	Percent Receiving No Prenatal Care	4.8%	5.0%	4.8%	3.7%	3.2%	*
New Jersey	Total Number of Births	114,905	114,365	113,332	113,850	113,810	-0.9%
	Percent Low Birth Weight	7.4%	7.5%	7.7%	8.0%	8.0%	*
	Percent Receiving No Prenatal Care	1.1%	1.3%	1.2%	1.1%	1.0%	*
Note: 1997 New Jersey numbers do not include unknown and institutional births. * In indicators where incidence is low, the rate may be statistically insignificant and caution is recommended when using rates and comparing across years. Source: New Jersey Department of Health and Senior Services, Center for Health Statistics							

		1995	1996	1997	1998	1999	Change 1995-1999
Newark	Percent of Total Births to Unmarried Mothers	68.7%	70.7%	69.2%	69.0%	68.5%	*
	Number of Births to Girls Under 15	29	27	30	25	21	-27.6%
	Number of Births to Girls 15-19	1,055	999	960	866	826	-21.7%
Essex County	Percent of Total Births to Unmarried Mothers	47.5%	48.2%	48.1%	48.7%	46.8%	*
	Number of Births to Girls Under 15	50	36	42	33	29	-42.0%
	Number of Births to Girls 15-19	1,618	1,571	1,486	1,393	1,328	-17.9%
New Jersey	Percent of Total Births to Unmarried Mothers	27.2%	27.1%	27.7%	28.7%	28.0%	*
	Number of Births to Girls Under 15	227	208	197	160	167	-26.4%
	Number of Births to Girls 15-19	9,117	8,599	8,624	8,661	8,225	-9.8%
<p>Note: 1997 New Jersey numbers do not include unknown and institutional births.</p> <p>* In indicators where incidence is low, the rate may be statistically insignificant and caution is recommended when using rates and comparing across years.</p> <p>Source: New Jersey Department of Health and Senior Services, Center for Health Statistics</p>							

		1995	1996	1997	1998	1999	Change 1995-1999
Newark	Infant Mortality Rate Per 1,000	12.7	14.9	13.3	13.5	12.9	1.6%
	Number of Child Deaths (1-14)	31	33	36	14	36	16.1%
	Number of Teen Deaths (15-19)	34	30	28	17	21	-38.2%
Essex County	Infant Mortality Rate Per 1,000	9.3	12.8	9.3	9.9	10.4	11.8%
	Number of Child Deaths (1-14)	62	55	63	32	51	-17.7%
	Number of Teen Deaths (15-19)	53	47	47	27	40	-24.5%
New Jersey	Infant Mortality Rate Per 1,000	6.7	6.9	6.4	6.4	6.8	1.5%
	Number of Child Deaths (1-14)	393	341	333	300	285	-27.5%
	Number of Teen Deaths (15-19)	282	273	280	245	234	-17.0%
Note: 1997 New Jersey numbers do not include unknown and institutional births. Source: New Jersey Department of Health and Senior Services, Center for Health Statistics							

	1995	1998	1999
Newark's Share of Essex County Births	42%	39%	39%
Newark's Share of New Jersey Births	5%	4%	4%
<hr/>			
Newark's Share of Essex County Births to girls under 15	58%	76%	72%
Newark's Share of New Jersey Births to girls under 15	13%	16%	13%
<hr/>			
Newark's Share of Essex County Births to girls 15-19	65%	62%	62%
Newark's Share of New Jersey Births to girls 15-19	12%	10%	10%
<hr/>			
Newark's Share of Essex County Child Deaths (Ages 1-14)	50%	44%	70%
Newark's Share of New Jersey Child Deaths (Ages 1-14)	8%	5%	13%
<hr/>			
Newark's Share of Essex County Teen Deaths (Ages 15-19)	64%	63%	52%
Newark's Share of New Jersey Teen Deaths (Ages 15-19)	12%	7%	9%
<p>Note: 1997 New Jersey numbers do not include unknown and institutional births. Source: New Jersey Department of Health and Senior Services, Center for Health Statistics</p>			

Pediatric Asthma

Total Children 18 and Under Admitted to the Hospital with the Diagnosis of Asthma				
	1998	1999	2000	Change 1998-2000
Newark	845	919	734	-13.1%
Essex County	1,263	1,389	1,128	-10.7%
New Jersey	4,991	6,052	4,809	-3.6%

Children 18 and Under Admitted to the Hospital <u>through the Emergency Room</u> with the Diagnosis of Asthma				
	1998	1999	2000	Change 1998-2000
Newark	648	732	571	-11.9%
Essex County	912	1,044	840	-7.9%
New Jersey	3,026	3,810	3,071	1.5%

Newark 2000 Pediatric Asthma Hospital Admissions by Age		
	Total Admissions	Percent Through Emergency Room
Less than 1 year*	221	66%
1 to 4	498	43%
5 to 9	144	48%
10 to 14	144	45%
15 to 18	56	46%
* Except newborns.		

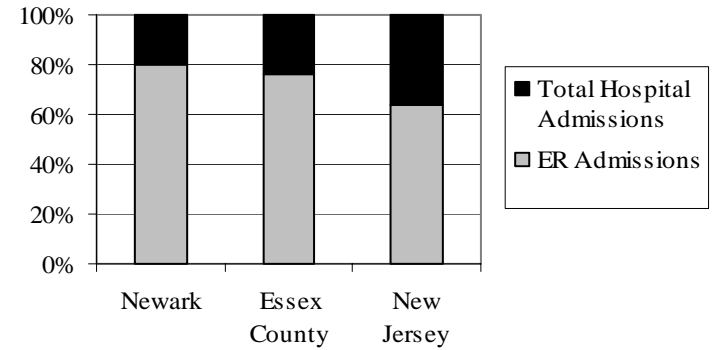
Source: NJ Department of Health & Senior Services

In 2000, 78% of Newark pediatric asthma hospital admissions were through the Emergency Room compared to 64% statewide.

In 2000, 65% of Essex County and 15% of New Jersey total pediatric hospital admissions were from Newark.

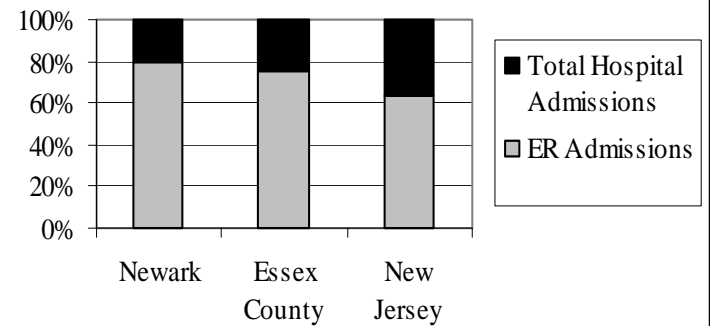


2000 Asthma Admissions for Children 18 and Under



Source: NJ Department of Health & Senior Services

1999 Asthma Admissions for Children 18 and Under



Source: NJ Department of Health & Senior Services

		New Jersey HIV/AIDS Surveillance Data														
		Children Living with HIV Disease by Current Age at end of Year and HIV/AIDS Status														
		1997			1998			1999			2000			2001		
		Living With			Living With			Living With			Living With			Living With		
		HIV	AIDS	Total	HIV	AIDS	Total	HIV	AIDS	Total	HIV	AIDS	Total	HIV	AIDS	Total
Newark	Ages 5 to 12	40	36	76	49	36	85	50	35	85	54	34	88	60	32	92
	Ages 13 to 19	20	18	38	21	21	42	19	24	43	20	25	45	25	27	52
	<i>Total Ages 5 to 19</i>	<i>60</i>	<i>54</i>	<i>114</i>	<i>70</i>	<i>57</i>	<i>127</i>	<i>69</i>	<i>59</i>	<i>128</i>	<i>74</i>	<i>59</i>	<i>133</i>	<i>85</i>	<i>59</i>	<i>144</i>
Essex County	Ages 5 to 12	76	50	126	85	52	137	87	49	136	91	49	140	96	47	143
	Ages 13 to 19	30	31	61	28	31	59	29	34	63	35	37	72	43	39	82
	<i>Total Ages 5 to 19</i>	<i>106</i>	<i>81</i>	<i>187</i>	<i>113</i>	<i>83</i>	<i>196</i>	<i>116</i>	<i>83</i>	<i>199</i>	<i>126</i>	<i>86</i>	<i>212</i>	<i>139</i>	<i>86</i>	<i>225</i>
New Jersey	Ages 5 to 12	195	158	353	212	161	373	226	166	392	236	162	398	246	144	390
	Ages 13 to 19	86	84	170	83	87	170	82	95	177	96	103	199	107	119	226
	<i>Total Ages 5 to 19</i>	<i>281</i>	<i>242</i>	<i>523</i>	<i>295</i>	<i>248</i>	<i>543</i>	<i>308</i>	<i>261</i>	<i>569</i>	<i>332</i>	<i>265</i>	<i>597</i>	<i>353</i>	<i>263</i>	<i>616</i>
											1999	2000	2001			
Newark's Share of Essex County Children Ages 5 to 19 Living with HIV/AIDS											64%	63%	64%			
Newark's Share of New Jersey Children Ages 5 to 19 Living with HIV/AIDS											22%	22%	23%			
Source: New Jersey Division of AIDS Prevention and Control, HIV/AIDS Surveillance Program, NJ Department of Health and Senior Services																

Newborns Exposed to HIV/AIDS by Year of Birth					
		1997	1998	1999	2000*
Newark	Exposed	71	62	57	67
	Known Infected	9	6	<5	<5
Essex County	Exposed	101	84	75	103
	Known Infected	14	8	<5	<5

The number of children exposed includes the number that are known infected.

* The 2000 numbers represent an increase from the data reported in the 2001 Newark Kids Count, this is due to delayed reporting at the New Jersey Department of Health and Senior Services.

Source: New Jersey Division of AIDS Prevention and Control, HIV/AIDS Surveillance Program, NJ Department of Health and Senior Services



Newark School Based Youth Services Program Health Clinic Data

	December 1998 to December 1999	January 2000 to December 2000	January 2001 to December 2001	Change 1998 - 2001
Total Number of Medical Contacts	1,680	3,227	3,234	93%
Total Number of Dental Contacts	1,293	1,578	2,421	87%
Total Number of Social Contacts*	1,626	1,439	1,479	-9%

The School Based Youth Services Program provides health care services to students from Pre-K to 8th Grade including medical and dental care, as well as health education and prevention programs. All children in each school are eligible for services as long as a parental consent form is provided. Health Clinics are located at Quitman Street School, Dayton Street School, George Washington Carver School and Malcolm X Shabazz High School.

Source: Community Clinical Services Department, Children's Hospital of New Jersey at Newark Beth Israel Medical Center.

Note: The number of contacts may include multiple contacts per child.

* Social Contacts refer to visits with a social worker. A child can initiate a social contact, or can be referred to a social worker by parents, principals or teachers.

Reported Cases of Sexually-Transmitted Diseases for Children 19 and Under in Newark

	1996	1997	1998	1999	2000	Change 1996 to 2000
Chlamydia	863	917	837	895	857	-0.7%
Gonorrhea	246	728	566	554	527	114.2%
Syphilis	14	50	48	27	31	121.4%
Total	1,123	1,695	1,451	1,476	1,415	26.0%

Source: STD Prevention and Control Program, NJ Department of Health and Senior Services.

Vaccination Coverage Levels of Two-Year-Olds Percent Receiving 4:3:1 Series					
	1997	1998	1999	2000	2001
Newark	70%	66%	69%	65%	67%
New Jersey	78%	85%	81%	77%	78%
United States	78%	81%	80%	78%	79%

Newark's 2001 estimated coverage level was the second lowest compared to all other states and selected geographic areas. Since 1997, Newark's estimated coverage level has ranked among the lowest three states and selected geographic areas.

Note: The Centers for Disease Control defines two year olds as children ages 19-35 months old. The 4:3:1 series includes 4 doses of the tetanus, diphtheria, and pertussis vaccine; 3 doses of the poliovirus vaccine; and 1 dose of the measles-mumps-rubella vaccine.

Source: Centers for Disease Control, National Immunization Survey, Morbidity and Mortality Weekly Report, July 1998, September 1999, July 2000, August 2001 and August 2002.

Kids Corporation Health Center Data

Between September 2000 and June 2002, the Kids Corporation Pediatric Nurses provided health screenings to 2,959 students in the fourth and fifth grades throughout Newark. Twenty percent of the children screened had dental problems, 10 percent were obese, 12 percent had vision problems, and 29 percent had no health insurance.

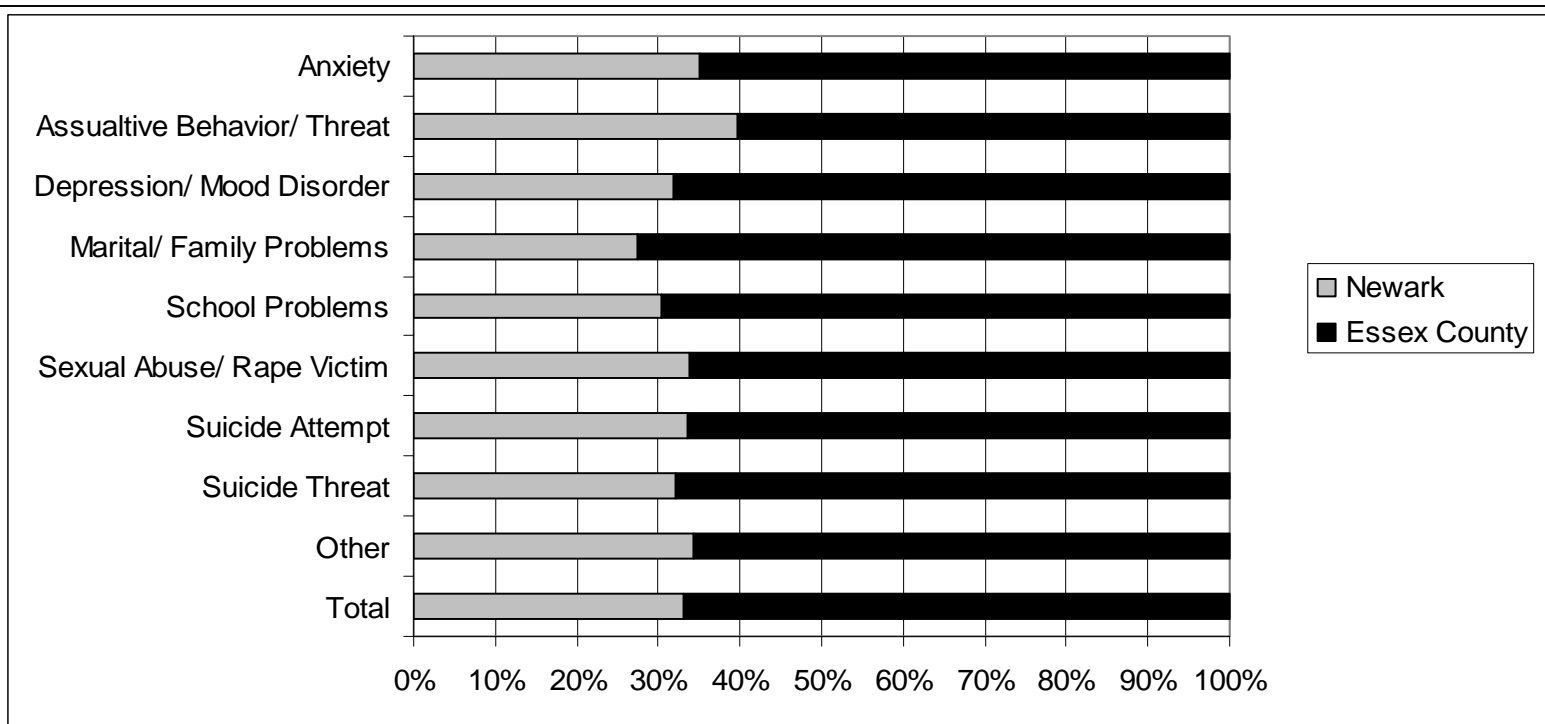
Source: Kids Corporation, Newark, NJ

MENTAL HEALTH

Children With Access To State-Funded Mental Health Programs*												
	Newark						Essex County					
	1997	1998	1999	2000	2001	Change	1997	1998	1999	2000	2001	Change
Anxiety	64	74	61	29	34	-47%	102	114	108	67	63	-38.2%
Assaultive Behavior/ Threat	125	173	203	126	124	-1%	238	291	312	221	189	-20.6%
Depression/ Mood Disorder	204	226	219	236	142	-30.4%	392	457	437	486	304	-22.4%
Marital/ Family Problem	118	119	105	90	69	-41.5%	273	228	269	192	183	-33%
School Problems	240	186	222	191	106	-55.8%	393	387	402	340	244	-38%
Sexual Abuse/ Rape Victim	32	26	21	13	19	-40.6%	65	52	45	29	37	-43%
Suicide Attempt	40	47	49	64	33	-17.5%	79	86	78	107	65	-17.7%
Suicide Threat	82	105	79	129	73	-11%	204	181	136	216	155	-24%
Other	334	350	386	348	306	-8.4%	736	643	715	652	584	-20.7%
Total	1,239	1,306	1,345	1,226	906	-27%	2,482	2,439	2,502	2,310	1,824	-26.5%

* These numbers represent the primary presenting problem of children who received services from fully or partially state-funded mental health programs. These numbers do not represent the total number of children in Newark with mental health problems. See glossary for further explanation.
 Source: Division of Mental Health Services, NJ Department of Human Services

**Newark's Share of Essex County Children With Access To
State-Funded Mental Health Programs* In 2001**



* These numbers represent the primary presenting problem of children who received services from fully or partially state funded mental health programs. These numbers do not represent the total number of children in Newark with mental health problems. See glossary for further explanation.
 Source: Division of Mental Health Services, NJ Department of Human Services

ENVIRONMENTAL HEALTH

Lead Levels for Children Under 18 Who Have Been Tested In Newark For Lead Poisoning in Fiscal Year 2001*								
Newark Zip Code	<10 µg/dL	10 –14 µg/dL	15 –19 µg/dL	20 – 44 µg/dL	45+ µg/dL	Total between 10 and 20 µg/dL	Total with 20 or Greater µg/dL	Total Number Tested
07101	87	6	2	0	0	8	0	95
07102	1158	74	35	13	1	109	14	1281
07103	2562	270	138	73	3	408	76	3,046
07104	1,817	48	18	25	2	66	27	1,910
07105	2,232	25	13	7	0	38	7	2,277
07106	1,221	89	40	37	3	129	40	1,390
07107	1,872	104	38	33	4	142	37	2,051
07108	1,242	142	57	53	8	199	61	1,502
07112	1,920	158	77	42	1	235	43	2,198
07114	255	4	4	1	1	8	2	265
Total	14,366	920	422	284	23	1,342	307	16,015

(µg/dL) Refers to micrograms of lead per decileter of whole blood. The Centers for Disease Control and Prevention consider any child with a blood lead level equal to or greater than 10 µg/dL to be suffering from childhood lead poisoning and in need of corrective follow up treatment. Children with blood lead levels between 10 and 20 µg/dL are to be provided with follow up testing and their families are to be provided with lead education and, if necessary, social referrals. Children with blood lead levels over 20 µg/dL are to be provided with appropriate medical treatment, case management and an investigation to determine the source of the lead.

* This includes children who are Newark residents (68.5%) and children who are not Newark resident but have been tested in Newark by their provider (31.5%).
 Source: NJ Department of Health and Senior Services

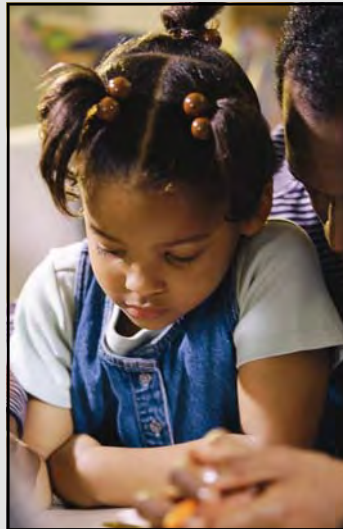


Ages of Children Under 18 Who Have Been Tested In Newark For Lead Poisoning in Fiscal Year 2001*						
Newark Zip Code	<1	1 – 2	3 – 5	6+	unknown	Total Number Tested
07101	0	31	55	6	3	95
07102	12	323	566	159	221	1,281
07103	64	824	1,131	592	435	3,046
07104	33	569	855	430	23	1,910
07105	35	620	695	355	572	2,277
07106	20	390	609	343	28	1,390
07107	32	603	935	418	63	2,051
07108	36	448	661	338	19	1,502
07112	100	687	934	417	60	2,198
07114	3	75	127	56	4	265
Total	335	4,570	6,568	3,114	1,428	16,015
* This includes children who are Newark residents (68.5%) and children who are not Newark residents but have been tested in Newark by their provider (31.5%). Source: NJ Department of Health and Senior Services						

Lead Levels in Newark's Drinking Water

2001	0.0126 mg of Lead Per 1 L of Water (mg/L)
June 2000	0.011 mg of Lead Per 1 L of Water (mg/L)
March - April, 1998	0.0126 mg of Lead Per 1 L of Water (mg/L)
November, 1997	0.0096 mg of Lead Per 1 L of Water (mg/L)
January - June, 1992	0.0271 mg of Lead Per 1 L of Water (mg/L)

Acceptable Limit for Lead in Drinking Water.....0.0150 mg of Lead Per 1 L of Water (mg/L)



Source: Division of Sewers and Water Supply, Newark Department of Water and Sewer Utilities

Number of Waste Sites Reported to the Agency for Toxic Substances and Disease Registry (ATSDR)

	1997	1998	1999	2000	2001	Change 1997 to 2001
Newark	10	12	8	9	9	-10%
New Jersey	186	204	214	223	238	28%

The ATSDR has the responsibility to conduct public health related activities at these sites.

113 out of the 238 sites in New Jersey are on the National Priorities List, meaning that they are most in need of cleanup. Two (2) of these 113 sites are in Newark.

Note: "HazDat is a scientific and administrative database developed to provide information on the release of hazardous substances from Superfund sites or from emergency events and on the health effects of hazardous substances on human populations. HazDat contains environmental and health data found in the Agency for Toxic Substances and Disease Registry public health assessments, health consultations, toxicological profiles, and other documents." - Agency for Toxic Substances and Disease Registry, July 1995.

Source: Agency for Toxic Substances and Disease Registry, HazDat, 1997, 1998, 1999, 2000, 2002.

Number of Newark Vacant Lots Converted Into Active Community or School Gardens

As of November, 2002:

The Greater Newark Conservancy (GNC) created and maintains **12** Community Gardens on land that used to be vacant lots. The GNC maintains outdoor gardens called Living Labs on former vacant lots adjacent to **9** Newark schools with 3 pending. The GNC provided and maintains indoor growing units called Grow Labs in **25** Newark Schools.

The Greater Newark Conservancy and collaborating partners coordinated these vacant lot conversions into gardens.

Source: The Greater Newark Conservancy

EDUCATION

Number of Students Enrolled in the Newark Public Schools			
	Elementary/Middle School	High School	Total Enrollment*
2000-2001	32,310	9,801	42,111
1999-2000	32,387	9,714	42,101
1998-1999	33,454	9,738	43,924
1997-1998	33,762	10,032	44,573
1996-1997	34,759	10,222	44,981
Change 1996-2001	-7.0%	-4.1%	-6.3%

* The Total Enrollment includes Newark evening students, home instruction and pre-Kindergarten students. These numbers exclude charter school enrollment.
Source: The Newark Public Schools

Student Ethnic Breakdown in the Newark Public Schools				
	Black	Hispanic	White	Other
2000-2001	61%	29%	9%	1%
1999-2000	62%	28%	9%	1%
1998-1999	64%	27%	8%	1%
1997-1998	63%	27%	8%	2%
1996-1997	64%	27%	8%	1%

Source: The Newark Public Schools

**Number of Students in Newark Public Schools
After School Youth Development Program**

		<u>% of total enrollment</u>
2000-2001.....	10,000	23.7%
1999-2000.....	7,498	17.8%
1998-1999.....	6,500	14.8%
1997-1998.....	6,500	14.6%
Change 1997-2001.....	53.8%	

Newark Public Schools Attendance Rate

<u>1996-1997</u>	<u>1997-1998</u>	<u>1998-1999</u>	<u>1999-2000</u>	<u>2000-2001</u>
90.2%	90.9%	90.5%	90.1%	90.2%

**Number of Newark Public School Students Receiving a
Reduced or Free Breakfast/Lunch at School**

		<u>% of all students</u>
2000-2001	34,844	82.7%
1999-2000	35,053	83.2%
1998-1999	35,172	80%
1997-1998	36,437	81.7%
1996-1997	27,483	61%
Change 1996-2001	27%	

The statewide average is 28% for all students receiving free or reduced lunch and approximately 50% in Essex County.

Source: The Newark Public Schools

Student Suspensions in the Newark Public Schools

<u>1996-1997</u>	<u>1997-1998</u>	<u>1998-1999</u>	<u>1999-2000</u>	<u>2000-2001</u>
2,354	2,410	2,402	2,501	2,522
Change 1996-20017.1%				

**Number of Violent Incidents and Weapon Possessions
in the Newark Public Schools**

2000-2001	356
1999-2000	366
1998-1999	231
1996-1997	366
Change 1996-2001.....	-2.7%

Newark Public Schools Proficiency and Aptitude Test Scores

Elementary School Proficiency Assessment (ESPA)

The ESPA is administered to 4th grade students.

	1999-2000			2000-2001		
	Partially Proficient	Proficient	Advanced Proficient	Partially Proficient	Proficient	Advanced Proficient
Language Arts - Newark	69%	31%	1%	48.1%	49.7%	2.2%
Language Arts - New Jersey	39%	57%	4%	14.7%	74.7%	10.6%
Mathematics - Newark	67%	28%	6%	69.7%	25.5%	6.6%
Mathematics - New Jersey	29%	50%	22%	28.7%	46.7%	24.6%
Science - Newark	43%	49%	8%	44.9%	45.2%	9.9%
Science - New Jersey	10%	57%	32%	9.5%	49.4%	41.1%

Grade Eight Proficiency Assessment (GEPA)

The GEPA is administered to 8th grade students.

	1999-2000			2000-2001		
	Partially Proficient	Proficient	Advanced Proficient	Partially Proficient	Proficient	Advanced Proficient
Language Arts - Newark	53%	47%	1%	53.7%	44.5%	1.8%
Language Arts - New Jersey	16%	76%	7%	17.8%	73.9%	8.3%
Mathematics - Newark	78%	19%	3%	73.5%	23.7%	2.8%
Mathematics - New Jersey	33%	48%	20%	29.9%	48.3%	21.7%
Science - Newark	71%	27%	1%	68.8%	29.4%	1.8%
Science - New Jersey	20%	58%	22%	18.5%	59.5%	22.0%

Note: "Partially Proficient" means that a child's score did not meet the state's minimum level of proficiency, based on this test administration, and may need some type of additional instructional support. The ESPA and GEPA are not promotion tests. Students do not have to "pass" the ESPA or GEPA to proceed to the next grade. These scores are for general education and do not include special education students or limited English proficient students. See glossary for further information.

Source: The Newark Public Schools, NJ School Report Card 1999-2000 and 2000-2001, NJ Department of Education

Newark Public Schools High School Proficiency Test (HSPT)										
<i>The HSPT is administered to 11th grade students.</i>										
<i>The state specifies that a score of 85% is considered the minimum level of proficiency.</i>										
	1996-1997		1997-1998		1998-1999		1999-2000		2000-2001	
	Passed	Failed	Passed	Failed	Passed	Failed	Passed	Failed	Passed	Failed
Reading	61%	40%	63%	37%	54%	46%	56%	44%	57%	43%
Writing	63%	37%	61%	39%	66%	34%	59%	41%	56%	44%
Mathematics	62%	38%	50%	50%	57%	43%	60%	40%	71%	29%

Source: The Newark Public Schools, NJ School Report Card 1999-2000 Update, NJ Department of Education

Newark Public Schools Scholastic Aptitude Test (SAT) Average Scores				
School	1999-2000 School Year		2000-2001 School Year	
	Math	Verbal	Math	Verbal
Arts High School	424	413	410	424
Barringer High School	356	344	356	343
Central High School	359	305	339	318
East Side High School	411	374	417	378
West Kinney Alternative High School	406	399	311	290
Malcolm X Shabazz High School	349	335	361	350
Science High School	494	463	499	473
Technology High School	356	347	397	388
University High School	459	462	442	445
Weequahic High School	356	325	347	347
West Side High School	367	349	377	360

Note: 2000-2001 New Jersey Average SAT Scores: Math - 514, Verbal - 496; 1999-2000 New Jersey Average SAT Scores: Math - 516, Verbal - 496
Source: NJ School Report Card 2001, NJ Department of Education (Evaluation Software)

Dropout Report for High Schools in the Newark Public Schools			
Year	Total Enrollment	Total Number of Dropouts	Percent of Dropouts
1998-1999	9,738	779	8.0%
1997-1998	10,032	712	7.1%
1996-1997	10,222	715	7.0%
1995-1996	11,022	881	8.0%
1994-1995	10,830	914	8.4%

Note: This report indicates the number of students in all high school grades who dropped out of high school in each given year.
 Source: The Newark Public Schools

Newark Public Schools High School Graduation Rates	
Year	Rate
2000-2001	44%
1999-2000	48%
1998-1999	41%
1997-1998	40%
1996-1997	41%

Note: This data indicates the average graduation rates for Newark High School students. See Glossary for further information.
 Source: Center for Government Services, Edward J. Bloustein School of Planning and Public Policy, Rutgers University.

Number of Newark Children Who Participated in Hands-on Education Programs at the New Jersey Historical Society				
<u>1998</u>	<u>1999</u>	<u>2000</u>	<u>2001</u>	
5,392	6,373	6,057	5,723	

Source: New Jersey Historical Society



Post Graduation Plans of Newark Public Schools High School Graduates of the Classes of 2000 and 2001

	4 Year College/ University		2 Year College		Other College		Other Post Secondary School		Military		Full Time Employment		Unemployed		Other/ Unknown	
	2000	2001	2000	2001	2000	2001	2000	2001	2000	2001	2000	2001	2000	2001	2000	2001
Arts High School	67%	71%	10%	10%	0%	0%	12%	9%	0%	0%	11%	10%	0%	0%	0%	0%
Barringer High School	19%	21%	44%	49%	0%	0%	9%	8%	0%	0%	17%	16%	1%	0%	10%	6%
Central High School	28%	21%	9%	24%	2%	0%	2%	8%	0%	0%	0%	7%	0%	8%	59%	33%
East Side High School	22%	25%	33%	29%	0%	0%	7%	10%	0%	0%	36%	36%	0%	0%	2%	0%
Malcolm X Shabazz High School	43%	31%	32%	13%	0%	4%	8%	1%	0%	0%	18%	24%	0%	8%	0%	19%
Science High School	72%	76%	12%	16%	0%	0%	7%	0%	0%	0%	4%	5%	0%	0%	6%	3%
Technology High School	18%	32%	35%	24%	5%	2%	2%	6%	0%	0%	34%	37%	6%	0%	1%	0%
University High School	72%	67%	10%	8%	0%	2%	4%	0%	0%	0%	14%	22%	0%	0%	0%	1%
Weequahic High School	11%	17%	20%	36%	1%	0%	4%	11%	0%	0%	10%	14%	0%	0%	54%	22%
West Kinney Alternative High School	4%	20%	11%	26%	0%	6%	28%	0%	0%	3%	33%	9%	7%	0%	17%	37%
West Side High School	19%	21%	19%	43%	3%	0%	5%	7%	0%	0%	29%	27%	3%	1%	22%	1%

Note: These numbers are self reported.
 Source: NJ School Report Card 2001, NJ Department of Education (Evaluation Software)

JUVENILE JUSTICE

	Newark			Essex County			New Jersey		
	Part 1 Juvenile Arrests	Total Juvenile Arrests	Total Arrests	Part 1 Juvenile Arrests	Total Juvenile Arrests	Total Arrests	Part 1 Juvenile Arrests	Total Juvenile Arrests	Total Arrests
2001	375	2,219	29,485	1,138	6,281	45,419	13,242	64,971	396,638
2000	330	1,862	26,814	1,192	6,324	43,244	14,522	67,532	398,776
1999	502	2,800	32,480	1,406	7,041	43,848	15,358	71,567	407,534
1998	419	2,658	33,146	1,706	8,535	49,933	17,611	76,793	439,249
1997	593	3,554	36,785	1,994	9,664	55,690	20,518	83,417	448,647
Change in Newark Total Arrests from 1997 to 2001 -36.8%									
Change in Newark Total Juvenile Arrests from 1997 to 2001 -35.9%									
Change in Newark Part 1 Juvenile Arrests from 1997 to 2001 -19.8%									
Newark's Total Juvenile Arrests share of Newark's Total Arrests in 2001 7.5%									
Newark's Part 1 Juvenile Arrests share of Essex County's Part 1 Juvenile Arrests in 2001 24.2%									
Newark's Total Juvenile Arrests share of Essex County's Total Juvenile Arrests in 2001 35.3%									
Newark's Part 1 Juvenile Arrests share of New Jersey's Part 1 Juvenile Arrests in 2001 2.8%									
Newark's Total Juvenile Arrests share of New Jersey's Total Juvenile Arrests in 2001 3.4%									
Note: Part 1 crimes are murder, rape, robbery, aggravated assault, burglary, larceny-theft and motor vehicle theft. These are indictable offenses, and are punishable with at least 1 year or more in jail. The perpetrator must go in front of a Grand Jury in the County Superior Court. Total arrests represent crimes committed by both juveniles and adults.									
Source: Newark Police Department, NJ Uniform Crime Reports 1996-2002.									

GLOSSARY

Data Sources and Definitions

Section 3: Demographics

Density - Number of people per square mile (U.S. Department of Commerce, Bureau of Census Data, 1990 and 2000).

Earned Income Tax Credit (EITC) Federal - A tax credit program for very low income working individuals, and low to moderate income working families. For example, a family with two or more children, who earned less than \$33,178 in 2002 can earn a maximum of \$4,140 in EITC (IRS).

Earned Income Tax Credit (EITC) New Jersey - A state tax credit program for low income working families. For example, a family with two or more children, who earned less than \$20,000 can earn a maximum of \$725 in NJ EITC (NJ Division of Taxation).

Estimated Median Household Income - U.S. Census Bureau. Income Distribution in 1999 of Households and Families: 2000, Census 2000 Summary File 3 (SF 3) - Sample Data. Income and Poverty Status in 1989: 1990, 1990 Summary Tape File 3 (STF 3) - Sample Data.

Estimated Percent of People In Poverty - U.S. Census Bureau. Income Distribution in 1999 of Households and Families: 2000, Census 2000 Summary File 3 (SF 3) - Sample Data. Income and Poverty Status in 1989: 1990, 1990 Summary Tape File 3 (STF 3) - Sample Data.

Estimated Percent of Children Under Age 18 in Poverty - U.S. Census Bureau. Income Distribution in 1999 of Households and Families: 2000, Census 2000 Summary File 3 (SF 3) - Sample Data. Income and Poverty Status in 1989: 1990, 1990 Summary Tape File 3 (STF 3) - Sample Data.

Per Capita Income - U.S. Census Bureau. Income Distribution in 1999 of Households and Families: 2000, Census 2000 Summary File 3 (SF 3) - Sample Data. Income and Poverty Status in 1989: 1990, 1990 Summary Tape File 3 (STF 3) - Sample Data.

Population - (U.S. Census Bureau, Census 2000 Redistricting Data (P.L. 94-171) Summary File, Table PL1, and 1990 census).

Registered Voters - City of Newark Office of the City Clerk, Essex County Board of Elections, Essex County Commissioner of Registrations Office, as of October 23, 1996, September 22, 1997, October 1998, December 29, 1999, November 2000, April 2001, November 2001, April 2002 and May 2002.

Self Sufficiency Standard for Essex County - The Self-Sufficiency Standard measures how much income is needed for a family of a given composition in a given place, to adequately meet its basic needs— without public or private assistance. (The Real Cost of Living in 2002: The Self-Sufficiency Standard for New Jersey and Legal Services of New Jersey Poverty Research Institute).

Section 4: Family Well-Being

Abbott Preschool - Full-day, year-round preschool for children ages 3 and 4 in the 30 Abbott districts throughout New Jersey.

Abbott Contracted Center - Head Start and Community Child Care Providers that are under contract with the Newark Public Schools to provide Abbott Preschool services to children ages 3 and 4.

Family Child Care - New Jersey's registration program for providers who offer home-based child care. A Family Child Care Provider may care for up to five non-resident children in their own home for a fee. Family Day Care providers comply with state requirements, but operate as independent small business owners. Programs for Parents recruits, trains, monitors and registers Family Day Care Providers for Newark and Essex County. The registration process is voluntary. Programs for Parents is designated by the NJ Department of Human Services as the Essex County Unified Child Care Agency.

Food Stamps - The number of children receiving Food Stamp benefits in 1998, 1999, 2000, 2001 and 2002 -March, July, November average (NJ Department of Human Services).

Licensed Child Care Centers - Number of child care centers in Newark that are currently licensed by the NJ Bureau of Licensing at the Division of Youth and Family Services (Division of Youth and Family Services, NJ Department of Human Services).

MEND Food Pantry - The numbers reported reflect the 10 food pantries in Newark that report to the Meeting Emergency Needs With Dignity (MEND) Network. They do not include every food pantry in the City of Newark. These food pantries are all located in Newark, but may serve residents of neighboring communities. In mid-2001 the number of food pantries reporting to the Meeting Emergency Needs With Dignity (MEND) Network dropped from 10 to 9. In addition, one of the Food Pantries was closed for several months for renovation (Meeting Emergency Needs With Dignity - MEND, Newark, NJ).

Out of Home Placements - The number of children placed in settings such as foster care, residential care or other out of home placements in 1996, 1998, 1999, 2000 and 2001. Newark data represent numbers as of July 1996, 1998, 1999, 2000 and 2001 (Division of Youth and Family Services, NJ Department of Human Services). Children who are placed in such a setting often lack the stability of a nurturing home life.

Substantiated Child Abuse Cases - The number of substantiated abuse and neglect cases in 1996, 1997, 1998, 1999 and 2000. Data in 1996 may reflect changes in DYFS case handling standards. A case is substantiated when a DYFS social worker determines that a child has been physically, sexually, mentally, or emotionally abused by a parent, guardian or other adult who has control or custody of the child, and that the abuse can cause or create a substantial risk of impairment or death to the child ("Children at Risk 1995 and 1996").

TANF (Temporary Assistance to Needy Families) - The number of children receiving TANF benefits in 1998, 1999, 2000, 2001 and 2002-March, July, November average. This time-limited program provides cash assistance to eligible needy families with children. As part of Work First New Jersey (WFNJ) the program also provides parents with job preparation, and support services to enable them to leave the program and become self sufficient. (NJ Department of Human Services).

WIC - A special supplemental food program for women, infants, and children which provides food and nutrition screening and education to at-risk, low-income pregnant women, new mothers, infants and children under age five. Data is for the quarters ending June 30, 1998, January 1, 1999, March 1, 2000, June 30, 2001 and June 30, 2002 (NJ Department of Health and Senior Services).

Section 5: Child Health

Acquired Immune Deficiency Syndrome (AIDS) - Number of cases of children under 18 reported to the NJ Department of Health and Senior Services as of June 30, 1996, September 30, 1997, December 31, 1998, September 30, 1999 and December 31, 2001 (NJ Division of AIDS Prevention and Control, HIV/AIDS Surveillance Program, NJ Department of Health and Senior Services).

Asthma - Number of children under 18 who are Newark residents who have been admitted into hospitals through the emergency room with the diagnosis of asthma in 1998, 1999 and 2000, and total number of children who have been admitted to the hospital with the diagnosis of asthma. This does not include emergency room asthma cases which were not admitted to the hospital (NJ Department of Health and Senior Services).

Birth Data - The total number of births in 1995, 1996, 1997, 1998 and 1999. All births to New Jersey residents may not be included in these preliminary numbers (Center for Health Statistics, NJ Department of Health and Senior Services).

Births to Single Mothers - Number of mothers not married at time of birth or any time during the pregnancy 1995, 1996, 1997, 1998 and 1999 (Center for Health Statistics, NJ Department of Health and Senior Services).

Births to Teens - The number of women under 15 and 15-19 who gave birth in 1995, 1996, 1997, 1998 and 1999 (NJ Department of Health and Senior Services). Children born to adolescents are more likely to be of low birth weight, to have health problems, and to suffer child abuse and neglect. Adolescent parents have fewer educational and career opportunities, thus perpetuating poverty for themselves and their children.

Child Deaths - The number of children ages 1-14 who died in 1995, 1996, 1997, 1998 and 1999 (NJ Department of Health and Senior Services). Note: Most counties and cities have relatively low numbers of child deaths.

Children Living with HIV/AIDS - The New Jersey Department of Health and Senior Services (NJDHSS) publishes statistics that reflect the number of persons living with HIV/AIDS in New Jersey by county of residence. These statistics are gathered by matching the state HIV/AIDS Reporting System (HARS) with the NJDHSS Death Certificate Registry on a monthly basis, and recording new deaths in the HARS. This allows NJDHSS to maintain and present current information on those still alive.

Death Data - The number of infant mortalities, child deaths and teen deaths in 1995, 1996, 1997, 1998 and 1999 (Center for Health Statistics, NJ Department of Health and Senior Services).

HIV/AIDS Exposed – Exposure or being exposed refers to those babies born to HIV infected mothers who potentially come in contact with the virus during pregnancy while in the mother’s womb as well as at the time of delivery when the baby passes down the birth canal. Live born babies who have potentially been exposed to HIV are followed from birth every 6 months by the NJDHSS until their infection or non-infection with the virus is known.

HIV/AIDS Known Infected – Since the NJDHSS follows up on all newborns known to be exposed to HIV, it is possible through communication with pediatricians to determine how many children actually became infected with the virus. The rate of transmission of HIV from infected mother to baby has declined statewide over the years from 21% in 1993 to 8% in 1998. This means that in 1998 here in New Jersey, 92% of babies born to HIV infected mothers were totally free of the HIV virus. Normally exposed babies get tested frequently in order to discover HIV infection as soon as possible. Once a pediatrician determines that the baby is known to be HIV infected, treatment regimens can be started.

Infant Mortality Rate - The number of infants per 1,000 who died before their first birthday in 1995, 1996, 1997, 1998 and 1999 (Center for Health Statistics, NJ Department of Health and Senior Services). High rates of infant mortality are indicative of poor access to health care, lack of prenatal care, birth defects and high rates of poverty.

Low Birth Weight - Percentage of babies born weighing below 2,500 grams (5.5 lbs.) in 1995, 1996, 1997, 1998 and 1999 (NJ Department of Health and Senior Services). These babies have a higher death rate (see Infant Mortality Indicator) and are more likely to develop disabilities which create a greater need for medical services, special education, and lifelong support services.

No Prenatal Care - Percentage of all children born in 1995, 1996, 1997, 1998 and 1999 whose mothers reported receiving no prenatal medical care (Center for Health Statistics, NJ Department of Health and Senior Services). Such children are more likely to be of low birth weight (see Low Birth Weight indicator). Mothers who do not receive prenatal care have higher rates of maternal death, illness and complications, all of which have adverse implications for the child.

School Based Youth Service Health Clinic Data - The School Based Youth Services Program provides health care services to students from Pre-K to 12th Grade including medical and dental care, as well as health education and prevention programs. All children in each school are eligible for services as long as a parental consent form is provided. Health Clinics are located at Quitman Street School, Dayton Street School, George Washington Carver School and Malcolm X Shabazz High School (Community Clinical Services Department, Children’s Hospital of NJ at Newark Beth Israel Medical Center).

Sexually Transmitted Diseases - Reported cases of sexually transmitted diseases for children under 19 in Newark to the NJ Department of Health and Senior Services for 1996, 1997, 1998, 1999, and 2000. These were obtained directly from the lab reports regardless of whether children received treatment. In other words, the data show all reported cases, not just those receiving treatment (Sexually Transmitted Disease Control Program, NJ Department of Health and Senior Services).

Teen Deaths - The number of adolescents (ages 15-19) who died in 1995, 1996, 1997, 1998 and 1999 (Center for Health Statistics, NJ Department of Health and Senior Services). Note: Most counties and cities have relatively low numbers of teen deaths.

Vaccination Coverage Levels - Percent of two-year-old children receiving the complete series of 4 doses of the diphtheria, tetanus and pertussis vaccine; 3 doses of the poliovirus vaccine; and 1 dose of the measles-mumps-rubella vaccine. Two-year-olds are defined as children ages 19-35 months (Centers for Disease Control, Morbidity and Mortality Weekly Report, July, 1997, July, 1998, September, 1999, July 2000 and August 2001).

Section 6: Mental Health

Primary Presenting Problem (PPP) - The Primary Presenting Problem of children admitted to mental health programs partially or fully funded by the state of New Jersey in 1996, 1997, 1998, 1999 and 2000. These numbers do not represent all children in mental health facilities, or the number of children in need of mental health services (Division of Mental Health Services, NJ Department of Human Services).

Section 7: Environmental Health

Lead Poisoning - ($\mu\text{g}/\text{dL}$) Refers to micrograms of lead per decileter of whole blood. The Centers for Disease Control and Prevention consider any child with a blood lead level equal or greater than 10 $\mu\text{g}/\text{dL}$ to be suffering from childhood lead poisoning and in need of corrective follow up treatment. Children with blood lead levels between 10 and 20 $\mu\text{g}/\text{dL}$ are to be provided with follow up testing and their families are to be provided with lead education and, if necessary, social referrals. Children with blood lead levels over 20 $\mu\text{g}/\text{dL}$ are to be provided with appropriate medical treatment, case management and an investigation to determine the source of the lead (NJ Department of Health and Senior Services).

Wastes Sites - Number of reported wastes sites to the Agency for Toxic Substances and Disease Registry (ATSDR), HazDat. Anyone concerned about the hazardous or nonhazardous status of a particular site should contact the ATSDR.

Water Lead Levels - The acceptable limit for lead in drinking water is 0.0150 mg of Lead per 1 L of water (Division of Sewers and Water Supply, Newark Department of Water and Sewer Utilities).

Section 8: Education

Children Receiving Free and Reduced Lunch/Breakfast - Number of school age children participating in the National School Lunch Program. This benefit is based on family income guidelines and is not offered in every school district (Newark Public Schools, Bureau of Child Nutrition, NJ Department of Education).

Elementary School Proficiency Assessment (ESPA) - Given to 4th grade students. The ESPA measures what students know and can do in language arts literacy (reading and writing), math and science, three of the content areas covered by the state's higher core curriculum content standards (NJ School Report Card, NJ Department of Education).

Grade Eight Proficiency Exam (GEPA) - Given to 8th grade students. The GEPA measures what students know and can do in language arts literacy (reading and writing) and math, two of the content areas covered by the state's higher core curriculum content standards (NJ School Report Card, NJ Department of Education).

High School Graduation Rate - This data indicates the average graduation rates for Newark High School students. Calculation for rates are as follows: number of graduates for a given year, divided by the number of 9th grade students enrolled as of October 15th, four years earlier. The number of students enrolled four years earlier does not include self-contained special education students, nor does it account for inter-district transfer students (data unavailable from NJDOE). The number of graduates includes some special education students. (Center for Government Services, Edward J. Bloustein School of Planning and Public Policy, Rutgers University).

High School Proficiency Test (HSPT) - A statewide assessment test administered in grade 11. It consists of three sections- reading, writing and math. It must be passed as a requirement for a high school diploma. Data represent cumulative percentage of enrolled, eligible students and excludes special education and limited English proficiency students (NJ School Report Card, NJ Department of Education).

Scholastic Aptitude Test (SAT) - Data represent average scores for high schools for the 1999-2000 and 2000-2001 school years. This test is used as selection criteria for admittance into most colleges and universities (NJ School Report Card, NJ Jersey Department of Education).

Student Enrollment - Number of students and ethnic breakdown in the Newark Public Schools in 1997, 1998, 1999, 2000 and 2001 (Newark Public Schools).

Violent Incidents and Weapon Possessions in the Newark Public Schools - Violent Incidents are defined as simple assaults, aggravated assaults, fighting, verbal threats and teacher confrontations. Weapon Possessions are defined as possession of a firearm or other weapon (Newark Public Schools).

Section 9: Juvenile Justice

Juvenile Arrest - The number of juveniles arrested (ages 10-17) in 1996, 1997, 1998, 1999 and 2000 ("Crime in New Jersey, Uniform Crime Report" and Newark Police Department).

**For more information about
Newark Kids Count
please contact
Tanya Whitney-Williams at ACNJ
(973) 643-3876 or twilliams@acnj.org**

**Newark Kids Count 2002-2003 is also
available at www.acnj.org**