



# South Dakota KIDS COUNT

February 2004

## The Right Start For America's Newborns: Comparisons\* of South Dakota and the Nation 1991-2001 Comparisons\* of South Dakota, the Nation, and bordering states, 2001

\*Data from: The Right Start for America's Newborns: City and State Trends 1990-2001

Accessed at <http://www.aecf.org/kidscount/rightstart/>

COMPILED AND EDITED BY: CAROLE COCHRAN, SD KIDS COUNT PROJECT DIRECTOR,  
DEBBIE STALVIG, BRB SECRETARY, AND MOLLY DANIEL, BRB ASSISTANT



*For further information contact:*

South Dakota KIDS COUNT Project

Business Research Bureau

The University of South Dakota

414 East Clark Street, Patterson Hall Rm. 132

Vermillion, SD 57069

Phone: 605.677.5287

Fax: 605.677.5427

E-mail: [ccochran@usd.edu](mailto:ccochran@usd.edu)

Copyright 2004, South Dakota KIDS COUNT Project. Permission to reproduce data from this book is granted, provided the source is cited as Cochran C. (2004) South Dakota KIDS COUNT . Vermillion, SD: SD KIDS COUNT, Business Research Bureau, The University of South Dakota.

# Introduction

In their on-line report, *The Right Start for America's Newborns*, The Casey Foundation presents data on eight measures of healthy births for each state and the nation's 50 largest cities.

This publication focuses on comparing the nation, South Dakota and those states that border South Dakota. It is important information because the circumstances and conditions under which a baby is born have lifelong implications.

The data are for 2001 for South Dakota and bordering states and 1990-2001 for South Dakota and the nation. The "right start" indicators are:

*Percent of total births to teens.*

*Percent of teen births to women who were already mothers*

*Percent of total births to unmarried women*

*Percent of total births to mothers with less than 12 years of education*

*Percent of total births to mothers receiving late or no prenatal care*

*Percent of total births to mothers who smoked during pregnancy*

**Note: Data on smoking during pregnancy on birth certificates in South Dakota were not compatible with NCHS standards therefore is not reported. The percentage reported by South Dakota in 2000 was 19.8%.**

*Percent low-birthweight babies (less than 5.5 pounds)*

*Percent preterm babies (less than 37 completed weeks of gestation)*

*Number of births by Race and Ethnicity of Mother.*

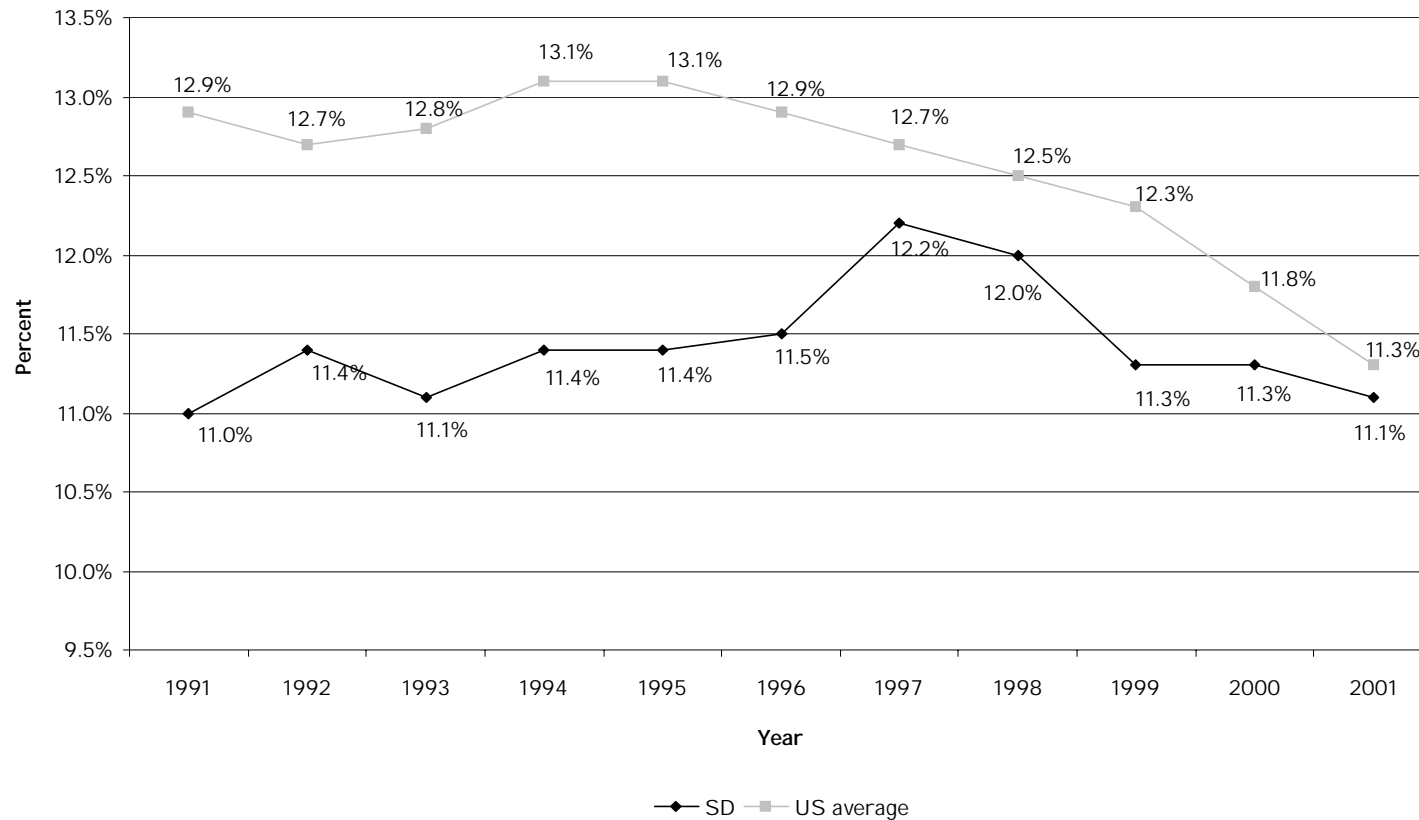
# Table of Contents

	Page
Percent of total births to teens .....	4
Percent of teen births to women who were already mothers .....	6
Percent of total births to unmarried women .....	8
Percent of total births to mothers with less than 12 years of education .....	10
Percent of total births to mothers receiving late or no prenatal care .....	12
Percent low birthweight babies (less than 5.5 pounds) .....	14
Percent preterm babies (less than 37 completed weeks of gestation) .....	16
Number of births by Race and Ethnicity of Mother .....	18
Raw data for indicators .....	20
Data sources .....	22

## Percent of total births to teens

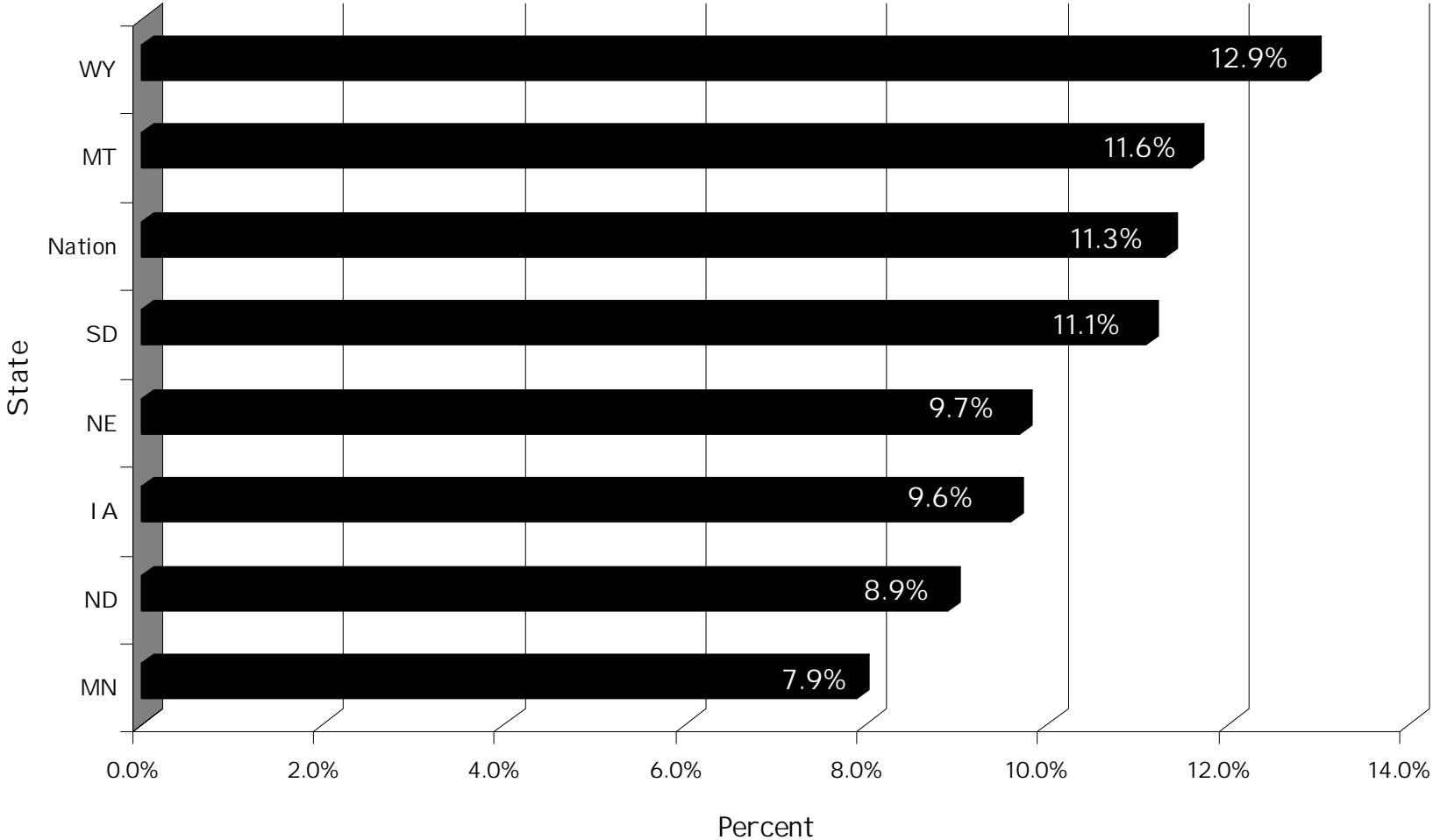
This indicator was calculated by dividing the number of births to women under age 20 by the total number of births to women of all ages. The data are reported by the mother's place of residence, not the place of birth. This is not the same as the teen birth rate, which measures the risk that a teenager will give birth. This percentage is also affected by the fertility of women over age 20.

Percent of total births to teens  
Trends for South Dakota and the Nation 1991-2001



Source: The Annie E. Casey Foundation (2004) The Right Start for America's Newborns: City and State Trends 1990-2001, Baltimore, MD: The Annie E. Casey Foundation.  
Accessed at <http://www.aecf.org/kidscount/rightstart/>

Percent total births to teens  
Comparing South Dakota, the Nation, and bordering states, 2001

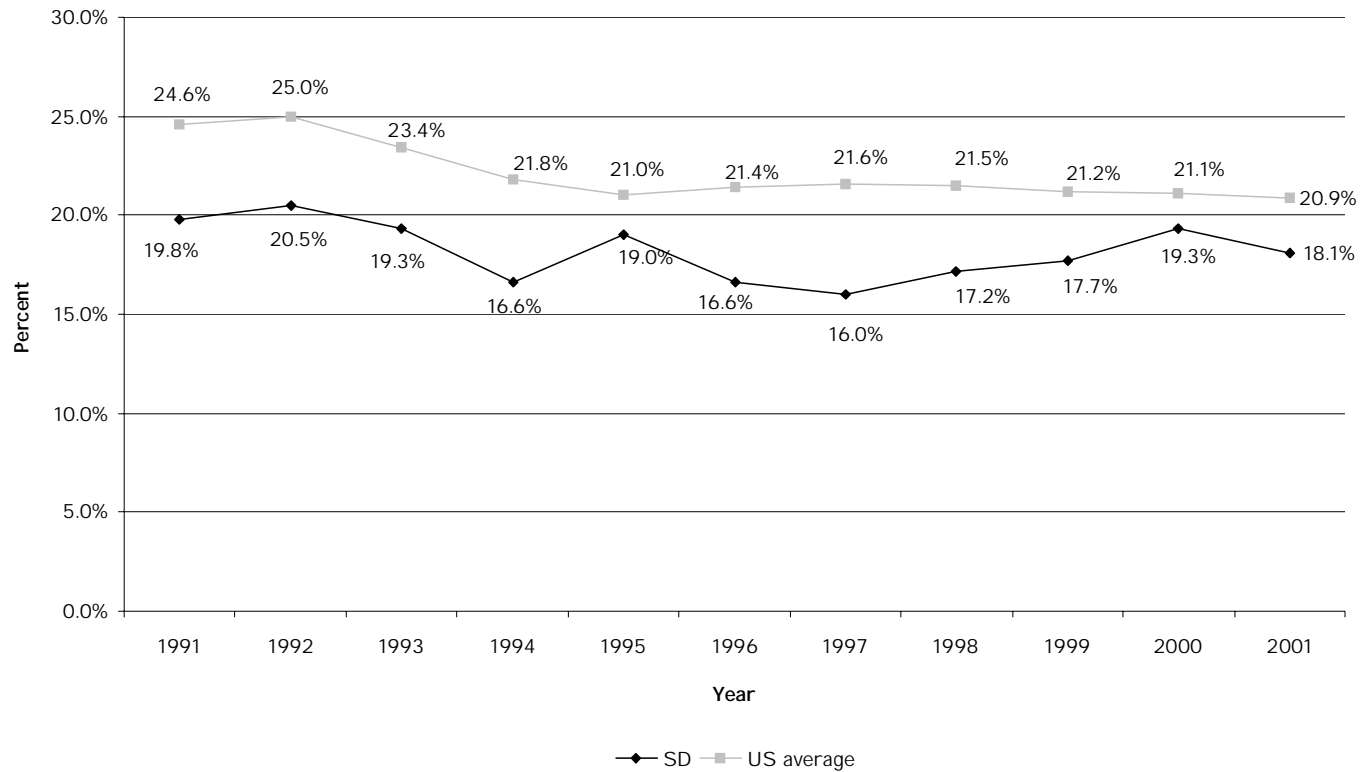


Source: The Annie E. Casey Foundation (2004) The Right Start for America's Newborns: City and State Trends 1991-2001 Baltimore, MD: The Annie E. Casey Foundation.  
Accessed at <http://www.aecf.org/kidscount/rightstart/>

## Percent of teen births to women who were already mothers

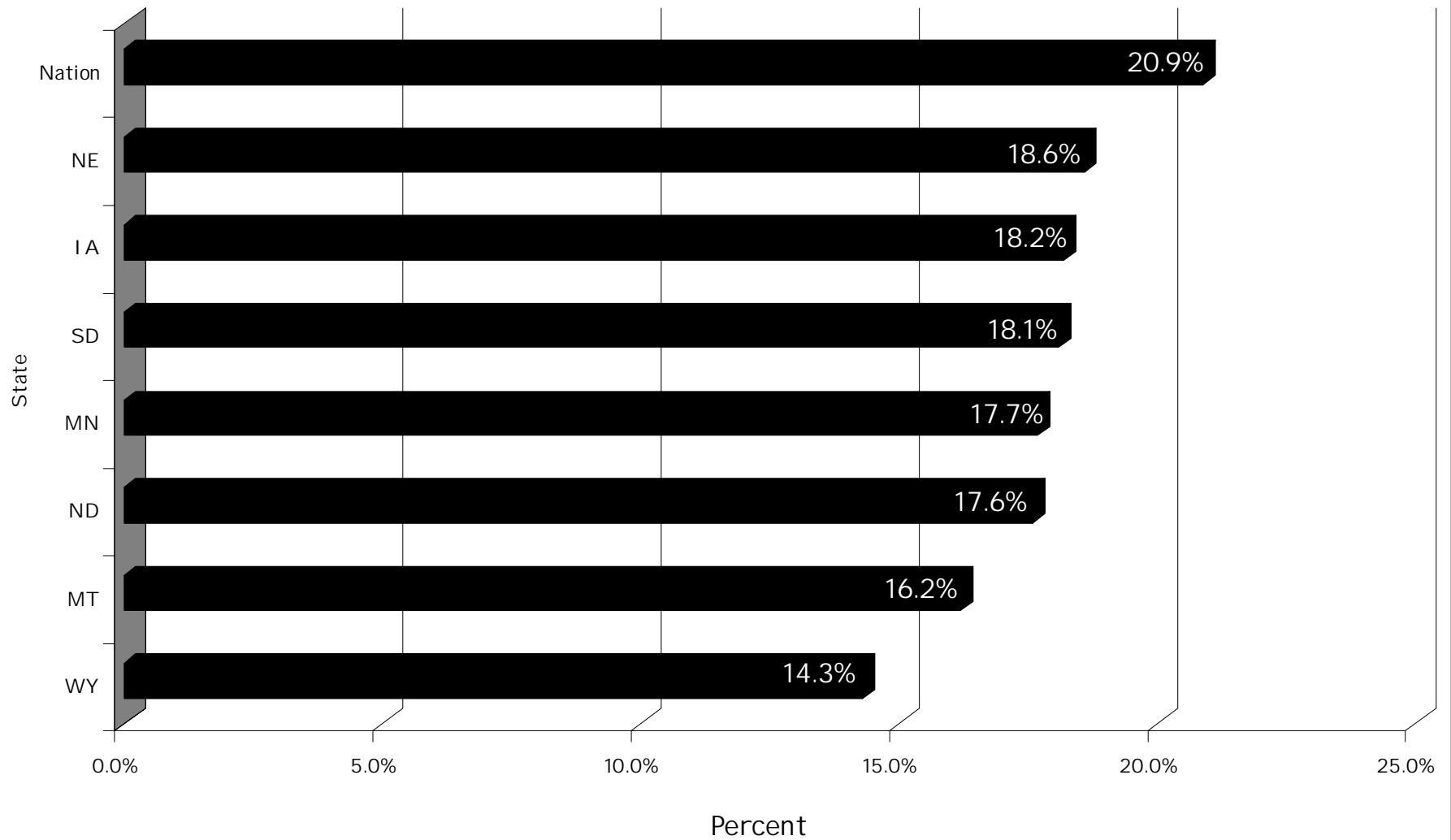
This measure is often referred to as "Repeat Teen Births." It is the percentage of births that were second or higher order births to mothers who were under the age of 20 at the time of the birth. Birth certificates that did not contain information on birth order were not included in this calculation.

Percent of births to teens who were already mothers  
Trends for South Dakota and the Nation 1991-2001



Source: The Annie E. Casey Foundation (2004) The Right Start for America's Newborns: City and State Trends 1990-2001, Baltimore, MD: The Annie E. Casey Foundation.  
Accessed at <http://www.aecf.org/kidscount/rightstart/>

Percent of teen births to women who were already mothers  
Comparing South Dakota, the Nation, and bordering states, 2001

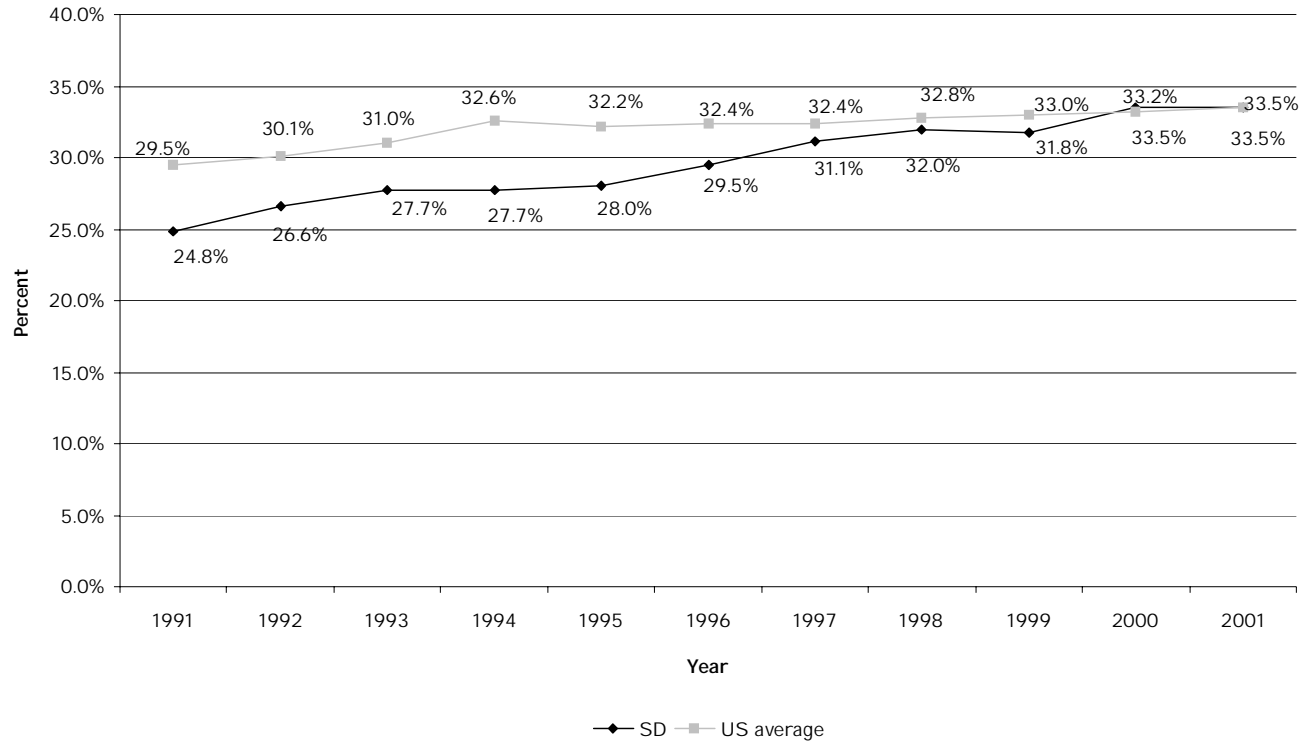


Source: The Annie E. Casey Foundation (2004) The Right Start for America's Newborns: City and State Trends 1991-2001 Baltimore, MD: The Annie E. Casey Foundation.  
Accessed at <http://www.aecf.org/kidscount/rightstart/>

## Percent of total births to unmarried women

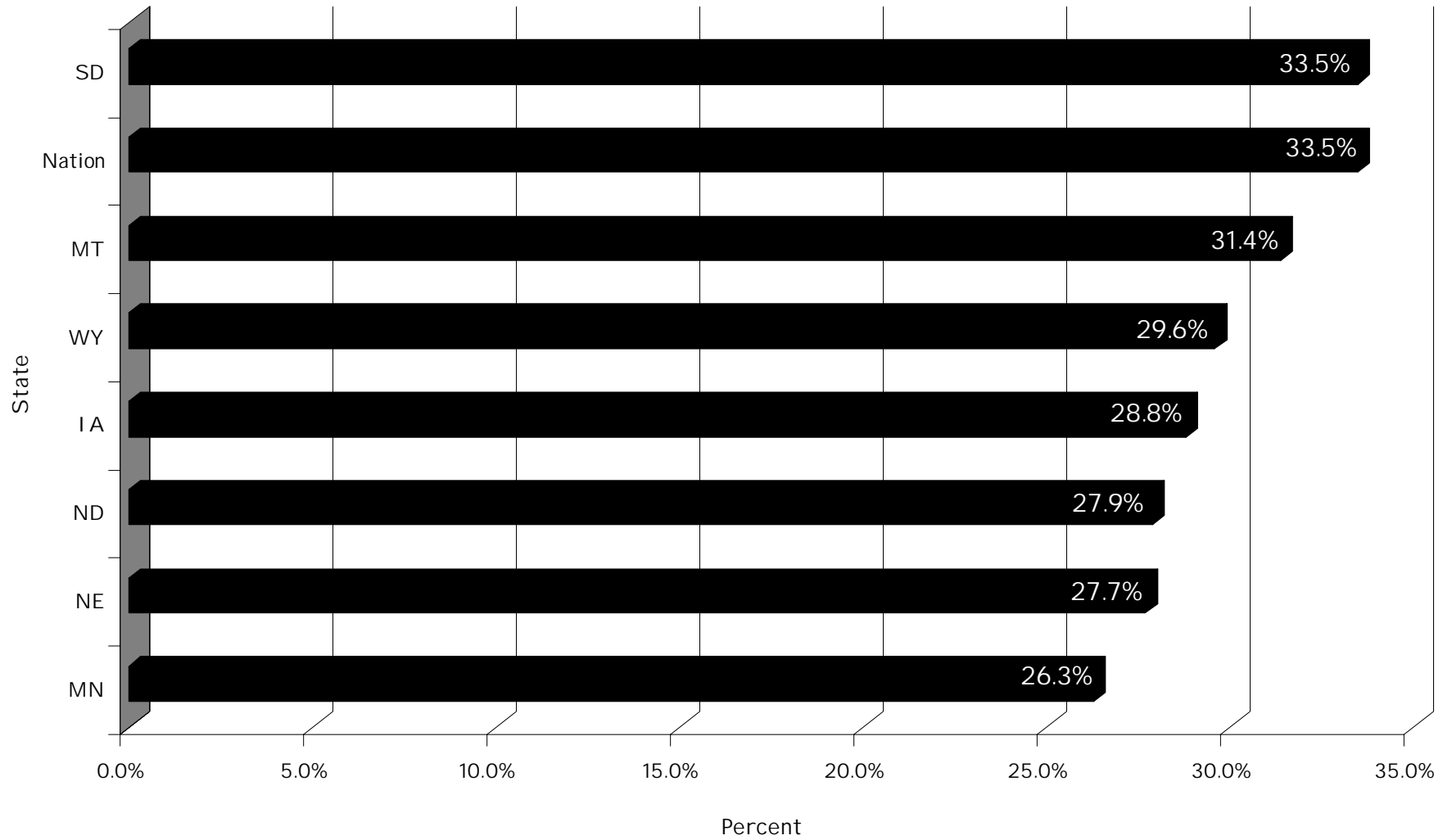
This is the percentage of all births occurring to women who were unmarried at the time of the birth. Marital status is obtained from a direct question on the birth certificate.

Percent of total births to unmarried women  
Trends for South Dakota and the Nation 1991-2001



Source: The Annie E. Casey Foundation (2004) The Right Start for America's Newborns: City and State Trends 1990-2001, Baltimore, MD: The Annie E. Casey Foundation.  
Accessed at <http://www.aecf.org/kidscount/rightstart/>

Percent of total births to unmarried women  
Comparing South Dakota, the Nation, and bordering states, 2001

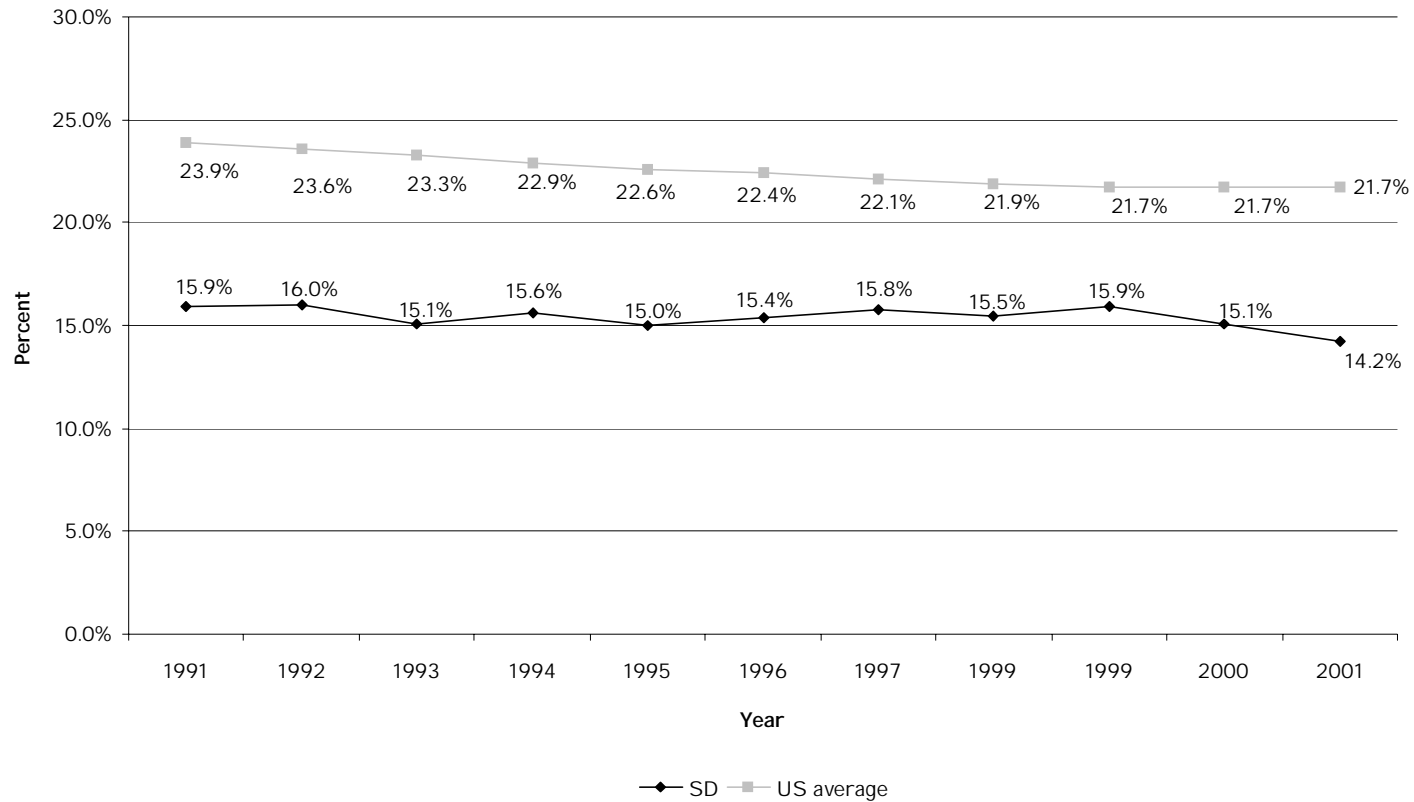


Source: The Annie E. Casey Foundation (2004) The Right Start for America's Newborns: City and State Trends 1991-2001 Baltimore, MD: The Annie E. Casey Foundation.  
Accessed at <http://www.aecf.org/kidscount/rightstart/>

## Percent of total births to mothers with less than 12 years of education

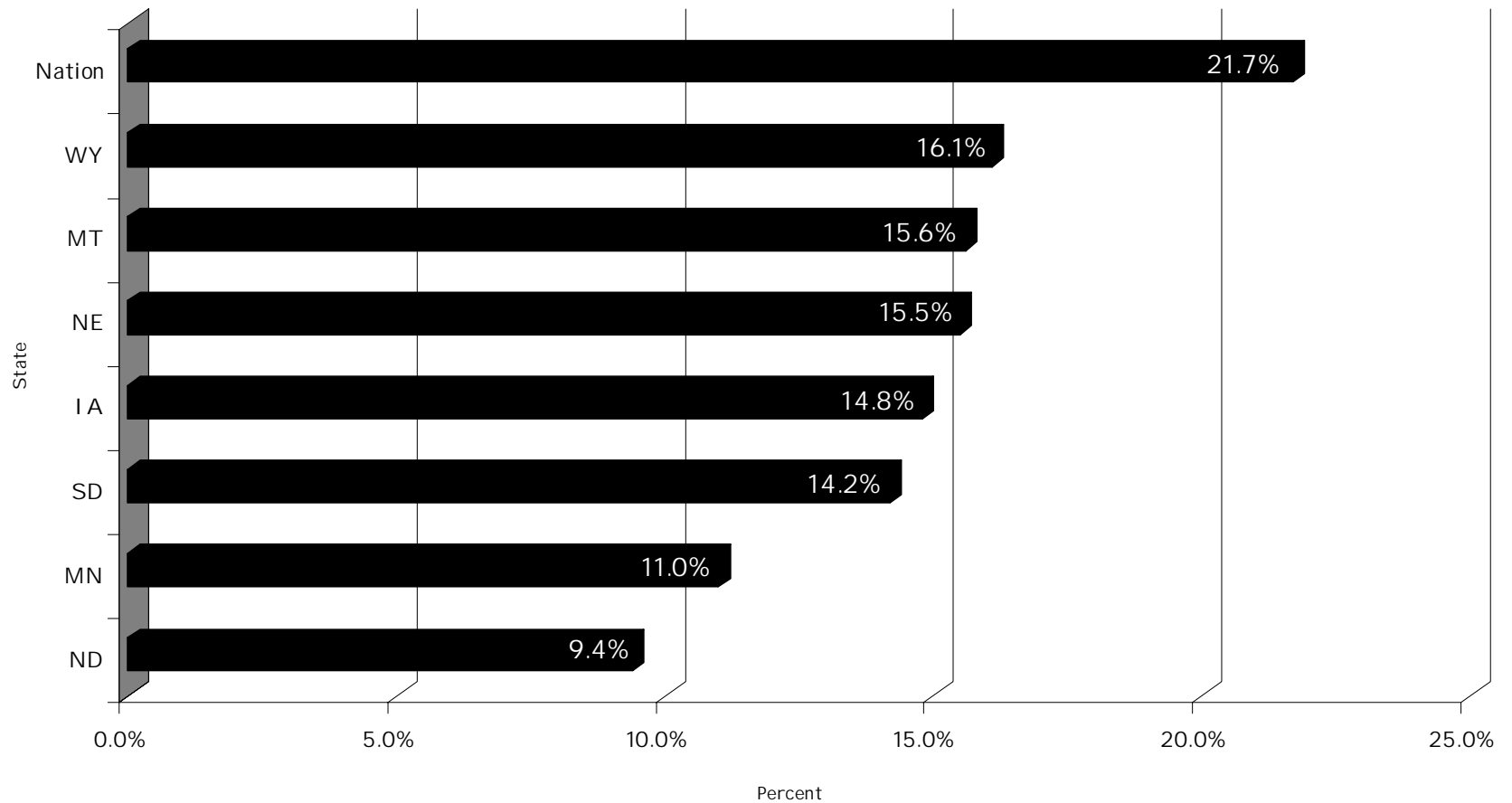
This is the percentage of women who had completed fewer than 12 years of education at the time of the birth. Birth certificates on which maternal education was not reported were not included in this calculation.

Percent of total births to mothers with less than 12 years of education  
Trends for South Dakota and the Nation 1991-2001



Source: The Annie E. Casey Foundation (2004) The Right Start for America's Newborns: City and State Trends 1990-2001, Baltimore, MD: The Annie E. Casey Foundation.  
Accessed at <http://www.aecf.org/kidscount/rightstart/>

Percent of total births to mothers with less than 12 years of education  
Comparing South Dakota, the Nation, and bordering states, 2001

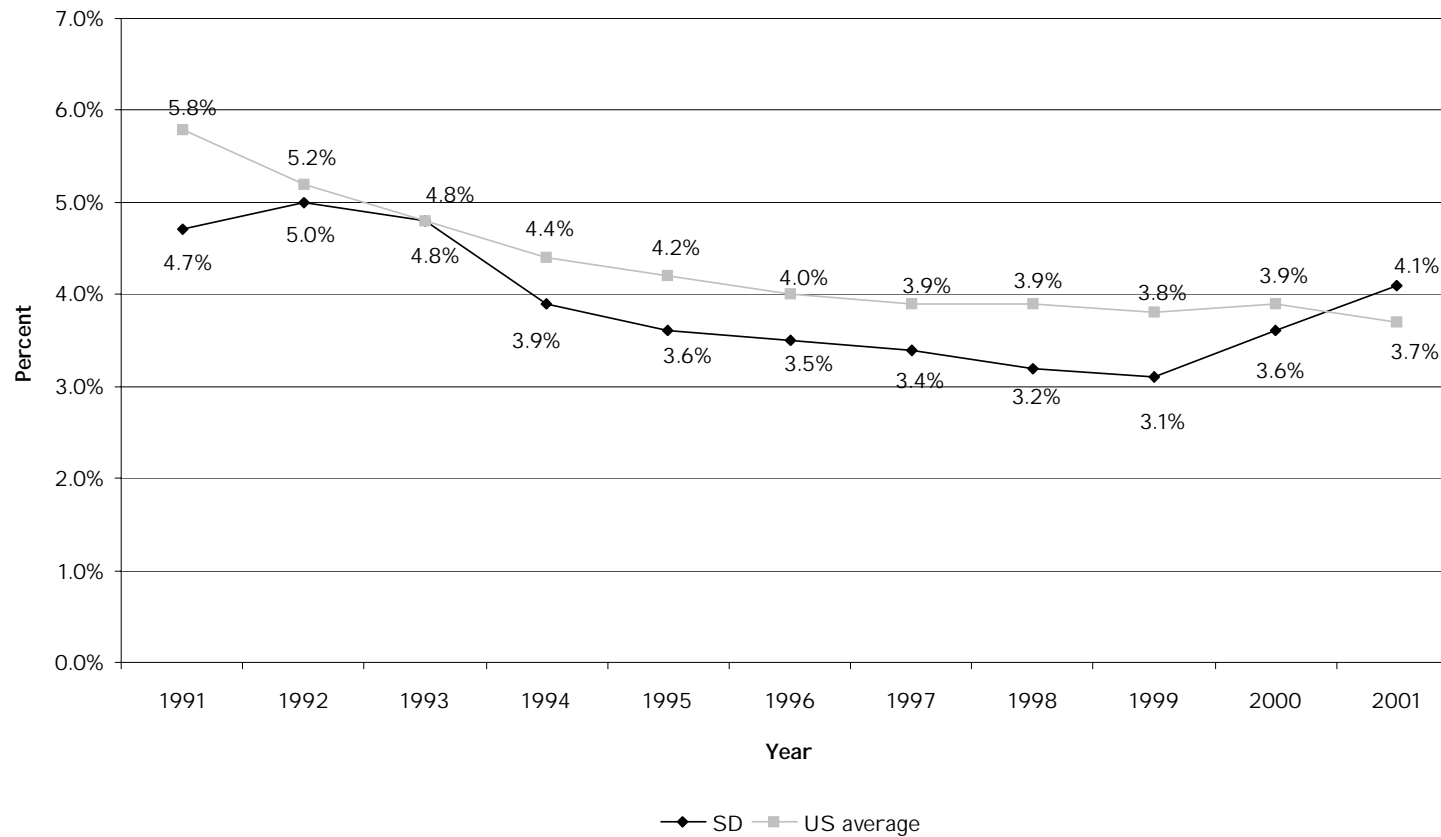


Source: The Annie E. Casey Foundation (2004) The Right Start for America's Newborns: City and State Trends 1991-2001 Baltimore, MD: The Annie E. Casey Foundation.  
Accessed at <http://www.aecf.org/kidscount/rightstart/>

## Percent of total births to mothers receiving late or no prenatal care

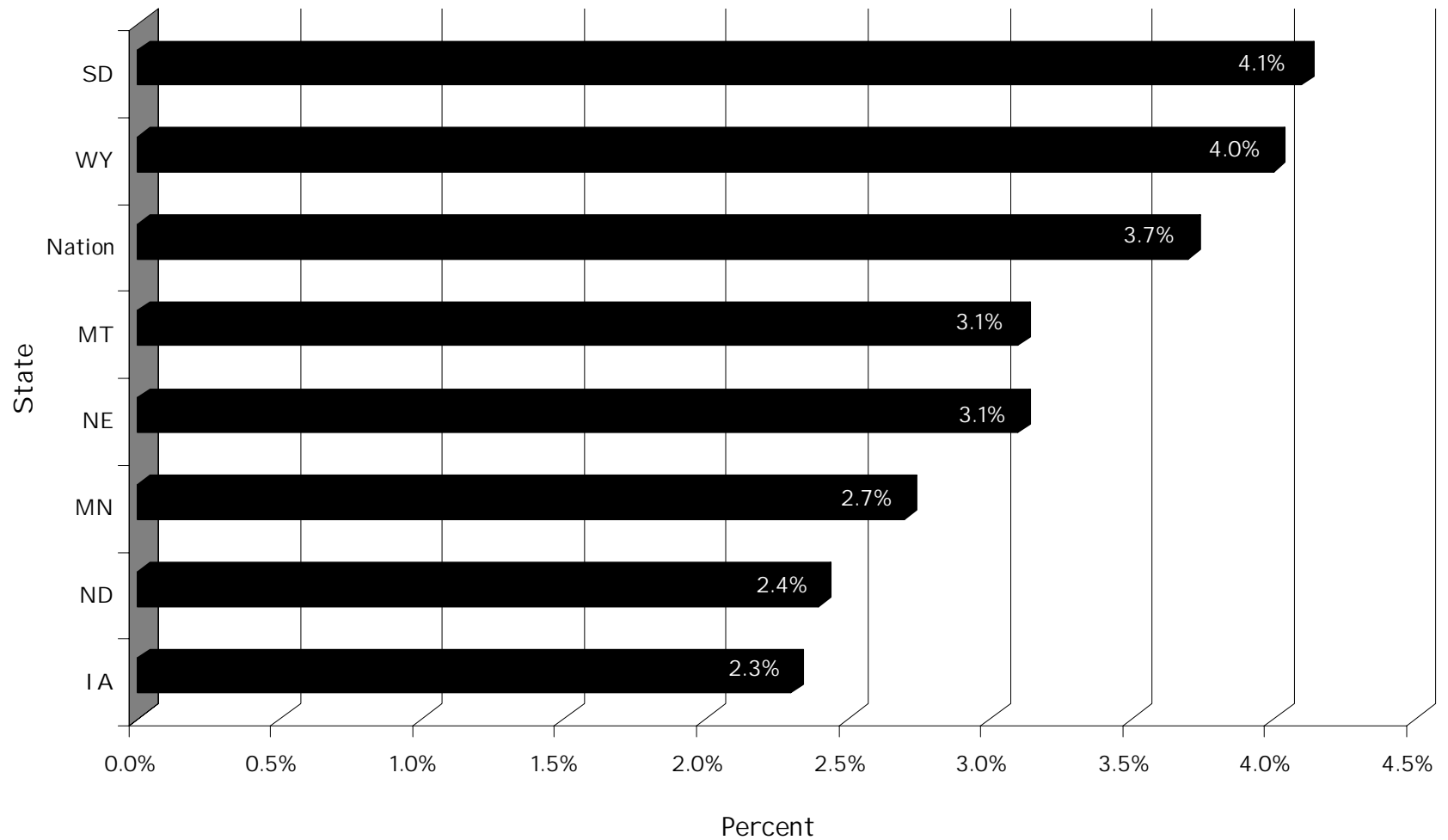
This is the percentage of births that occurred to mothers who reported receiving prenatal care only in the third trimester of their pregnancy, or receiving no prenatal care. Birth certificates that did not report information about prenatal care were not included in this calculation.

Percent of total births to mothers receiving late or no prenatal care  
Trends for South Dakota and the Nation 1991-2001



Source: The Annie E. Casey Foundation (2004) The Right Start for America's Newborns: City and State Trends 1990-2001, Baltimore, MD: The Annie E. Casey Foundation.  
Accessed at <http://www.aecf.org/kidscount/rightstart/>

Percent of total births to mothers receiving late or no prenatal care  
Comparing South Dakota, the Nation, and bordering states, 2001

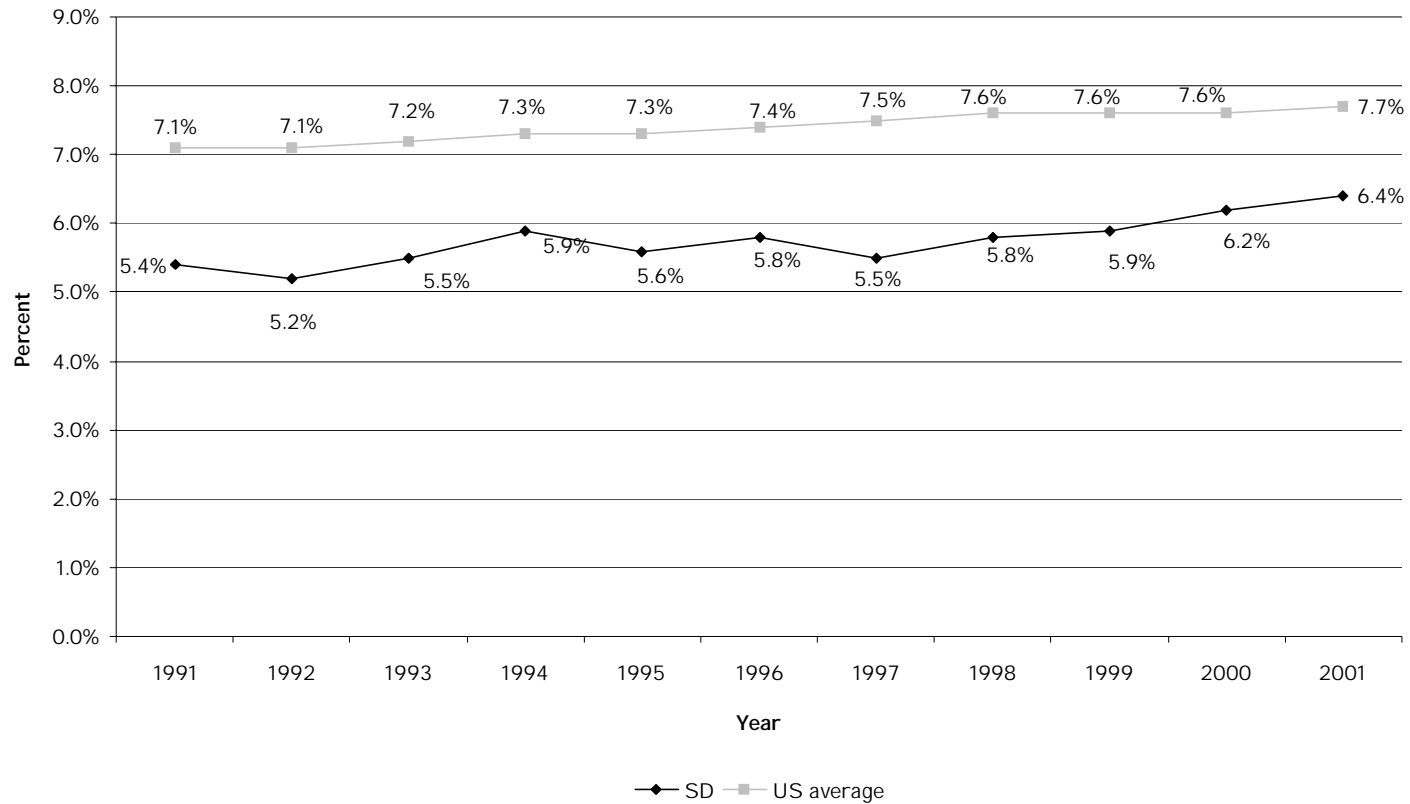


Source: The Annie E. Casey Foundation (2004) The Right Start for America's Newborns: City and State Trends 1991-2001 Baltimore, MD: The Annie E. Casey Foundation.  
Accessed at <http://www.aecf.org/kidscount/rightstart/>

## Percent low-birthweight babies (less than 5.5 pounds)

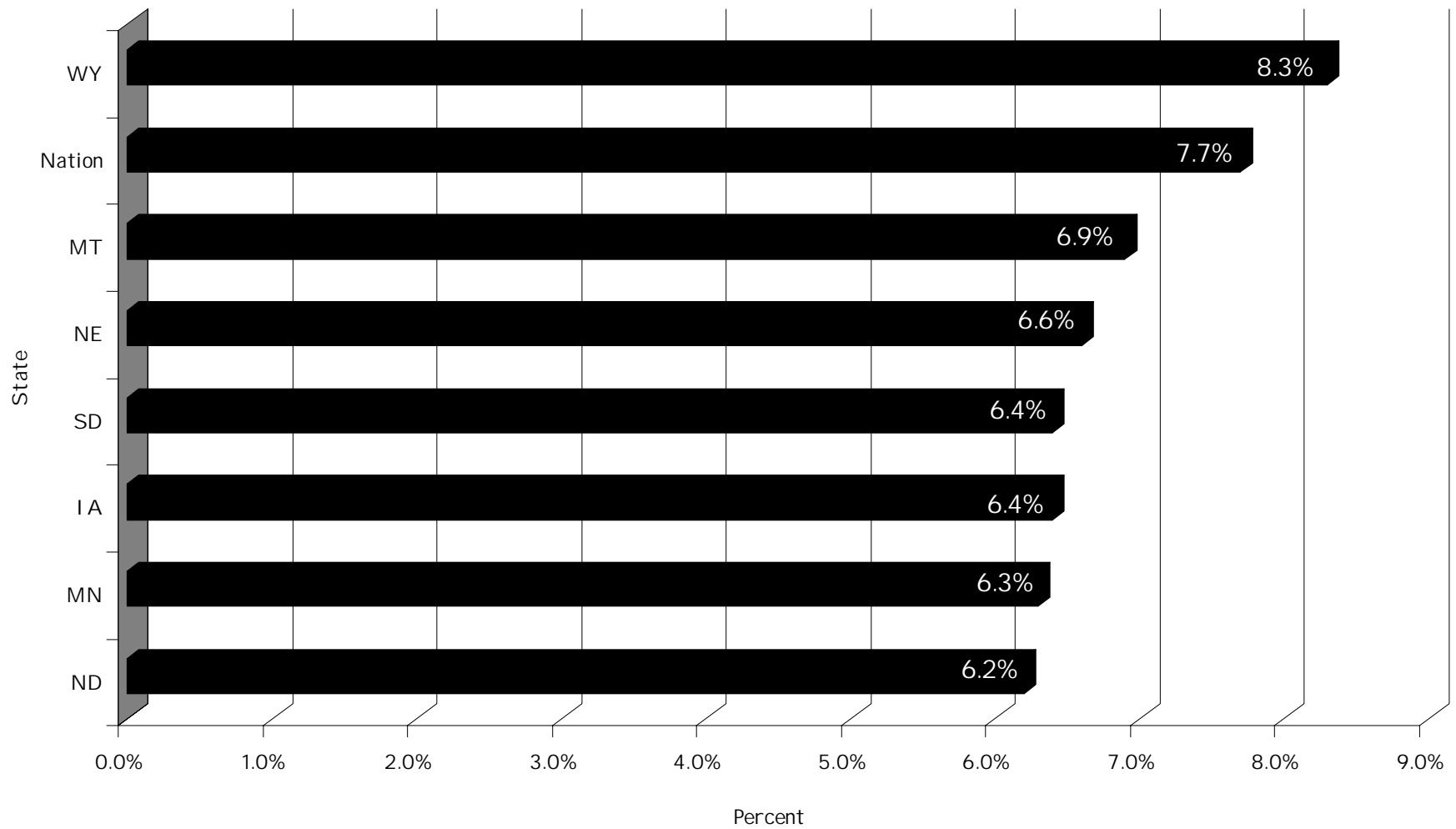
This is the percentage of live births weighing less than 2,500 grams (5.5 pounds). Births of unknown weight were not included in these calculations.

Percent low birthweight babies (less than 5.5 pounds)  
Trends for South Dakota and the Nation 1991-2001



Source: The Annie E. Casey Foundation (2004) The Right Start for America's Newborns: City and State Trends 1990-2001, Baltimore, MD: The Annie E. Casey Foundation.  
Accessed at <http://www.aecf.org/kidscount/rightstart/>

Percent low birthweight babies (less than 5.5 pounds)  
Comparing South Dakota, the Nation, and bordering states, 2001

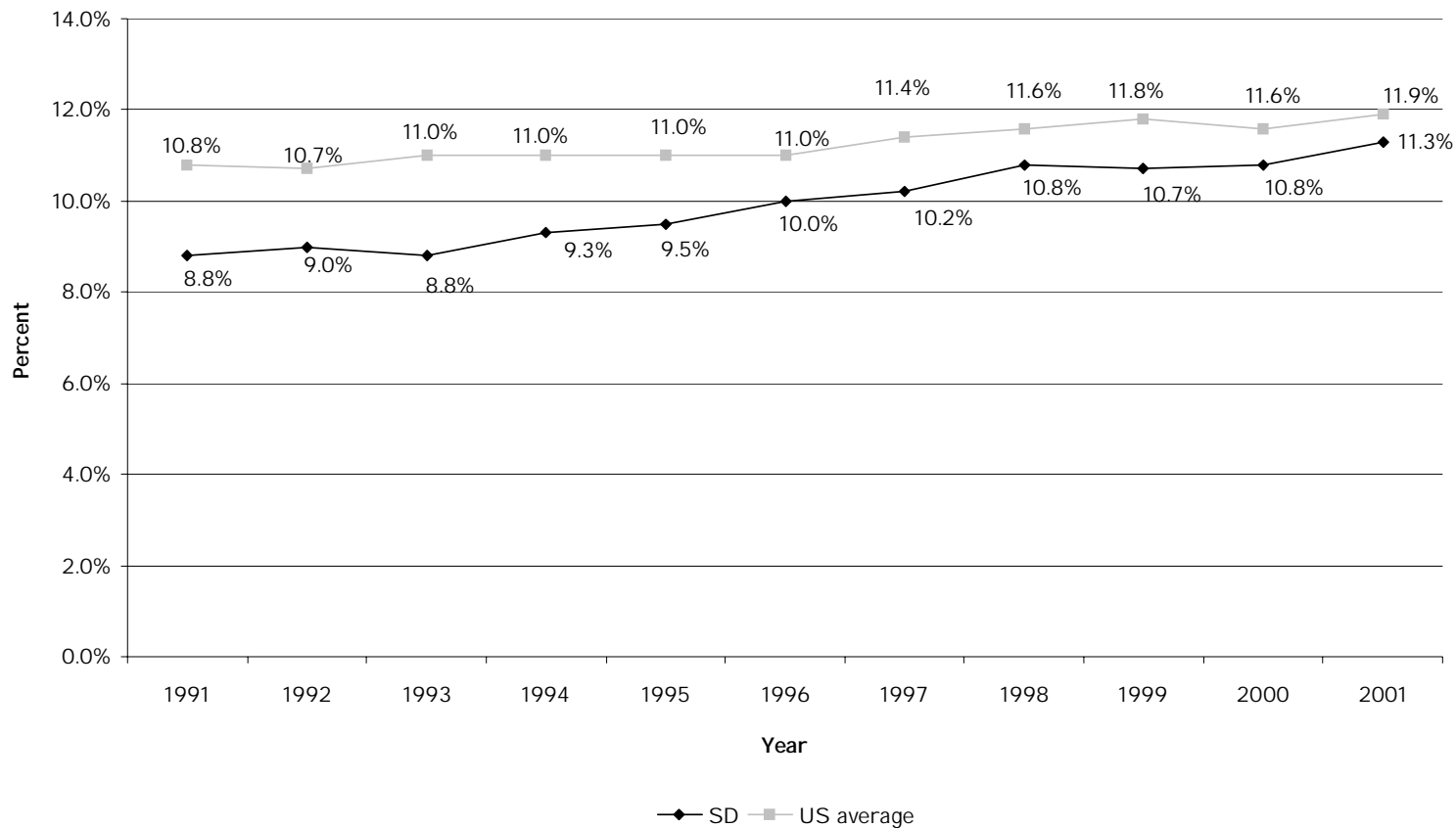


Source: The Annie E. Casey Foundation (2004) The Right Start for America's Newborns: City and State Trends 1991-2001 Baltimore, MD: The Annie E. Casey Foundation.  
Accessed at <http://www.aecf.org/kidscount/rightstart/>

## Percent preterm births (less than 37 completed weeks of gestation)

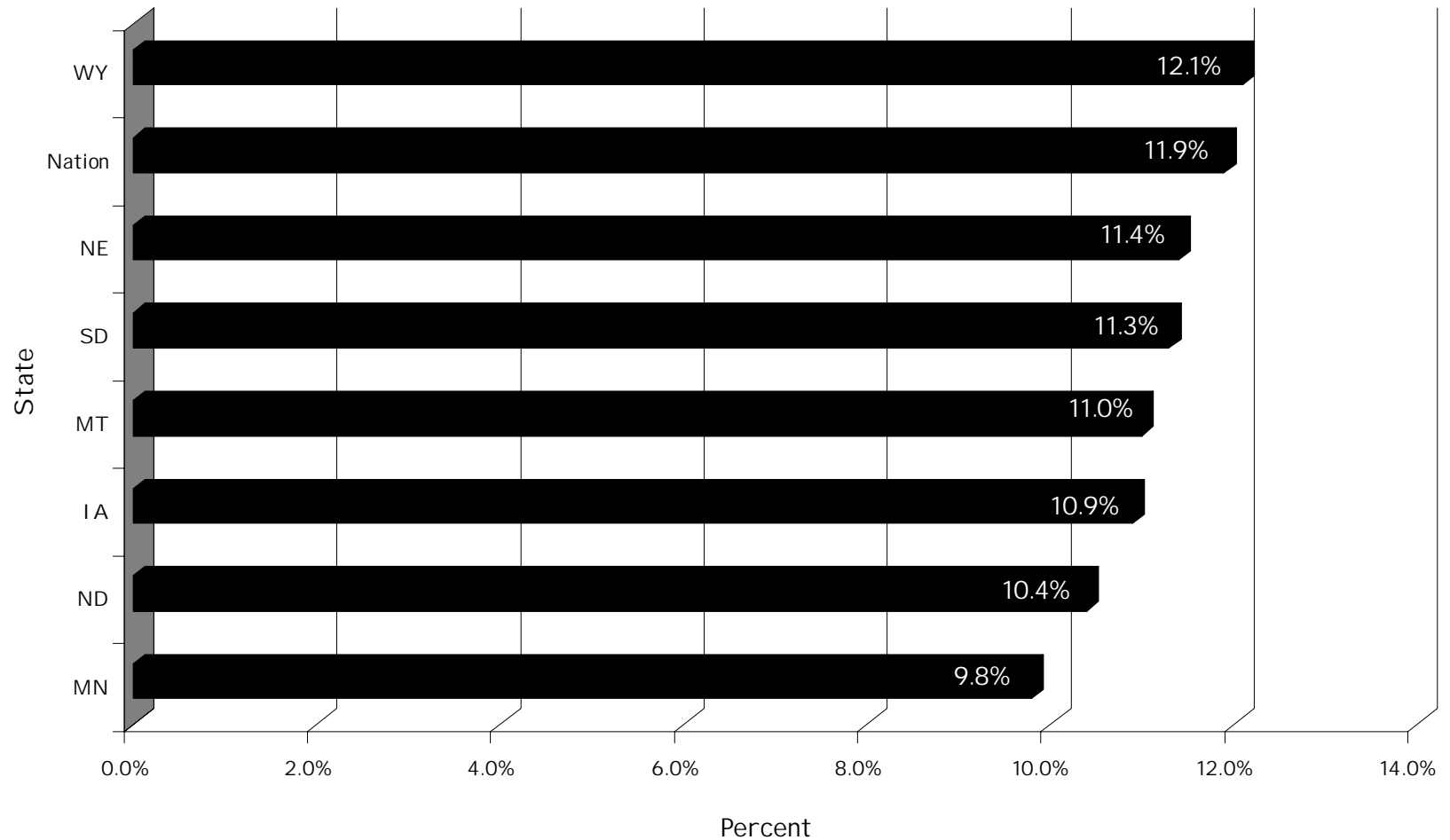
This is the percentage of babies born with a gestational age of less than 37 completed weeks. Birth certificates that did not report gestational age were not included in this calculation.

Percent preterm babies (less than 37 completed weeks of gestation)  
Trends for South Dakota and the Nation 1991-2001



Source: The Annie E. Casey Foundation (2004) The Right Start for America's Newborns: City and State Trends 1990-2001, Baltimore, MD: The Annie E. Casey Foundation.  
Accessed at <http://www.aecf.org/kidscount/rightstart/>

Percent preterm babies (less than 37 completed weeks of gestation)  
Comparing South Dakota, the Nation, and bordering states, 2001



Source: The Annie E. Casey Foundation (2004) The Right Start for America's Newborns: City and State Trends 1991-2001 Baltimore, MD: The Annie E. Casey Foundation.  
Accessed at <http://www.aecf.org/kidscount/rightstart/>

## Number of births by Ethnicity for South Dakota: 2001

Number of births by race and ethnicity of mother contains information about race/Hispanic origin of the mother. On birth certificates, as on most federal data collection forms, the question regarding whether a person is Hispanic is separate from the question asking whether a person is white, black, Asian or Pacific Islander, or Native American. Thus, people are asked to select a racial group and to indicate whether they are of Hispanic origin. A birth to a woman who reported that she was Hispanic and white would usually be included in figures for both of these groups. In order to create mutually exclusive categories, Hispanics were removed from the black and white racial categories in the tabulations presented here. This allows more meaningful comparisons between minorities and the group people typically think of when we say "white." It should also be noted that these figures represent the race of the mother, not the race of the child. This is important because increasing numbers of children are born to parents of different races. Births for which Hispanic origin was not reported are included in the "Other" category.

Total births:	10,483	100%
Non-Hispanic White:	8,254	78.7%
Non-Hispanic Black:	97	0.9%
Hispanic:	257	2.5%
Other*:	1,864	17.8%

\* The Other category consists of Asian-Pacific Islanders, American Indians, and whites and blacks where Hispanic origin is unknown.

This page is intentionally blank.

## Raw data for birth outcome indicators - South Dakota and the Nation 1990-2000

		1990	1991	1992	1993	1994	1995	1996	1997	1998	1999	2000
Percent total births to teens	SD	10.8%	11.0%	11.4%	11.1%	11.4%	11.4%	11.5%	12.2%	12.0%	11.3%	11.3%
	US average	12.8%	12.9%	12.7%	12.8%	13.1%	13.1%	12.9%	12.7%	12.5%	12.3%	11.8%
Percent of teen births to women who were already mothers	SD	23.7%	19.8%	20.5%	19.3%	16.6%	19.0%	16.6%	16.0%	17.2%	17.7%	19.3%
	US average	24.3%	24.6%	25.0%	23.4%	21.8%	21.0%	21.4%	21.6%	21.5%	21.2%	21.1%
Percent of total births to unmarried women	SD	22.9%	24.8%	26.6%	27.7%	27.7%	28.0%	29.5%	31.1%	32.0%	31.8%	33.5%
	US average	28.0%	29.5%	30.1%	31.0%	32.6%	32.2%	32.4%	32.4%	32.8%	33.0%	33.2%
Percent of total births to mothers with less than 12 years of education	SD	15.2%	15.9%	16.0%	15.1%	15.6%	15.0%	15.4%	15.8%	15.5%	15.9%	15.1%
	US average	23.8%	23.9%	23.6%	23.3%	22.9%	22.6%	22.4%	22.1%	21.9%	21.7%	21.7%
Percent of total births to mothers receiving late or no prenatal care	SD	4.9%	4.7%	5.0%	4.8%	3.9%	3.6%	3.5%	3.4%	3.2%	3.1%	3.6%
	US average	6.1%	5.8%	5.2%	4.8%	4.4%	4.2%	4.0%	3.9%	3.9%	3.8%	3.9%
Percent low birthweight babies (less than 5.5 pounds)	SD	5.1%	5.4%	5.2%	5.5%	5.9%	5.6%	5.8%	5.5%	5.8%	5.9%	6.2%
	US average	7.0%	7.1%	7.1%	7.2%	7.3%	7.3%	7.4%	7.5%	7.6%	7.6%	7.6%
Percent preterm babies (less than 37 completed weeks of gestation)	SD	8.9%	8.8%	9.0%	8.8%	9.3%	9.5%	10.0%	10.2%	10.8%	10.7%	10.8%
	US average	10.6%	10.8%	10.7%	11.0%	11.0%	11.0%	11.0%	11.4%	11.6%	11.8%	11.6%

Source: The Annie E. Casey Foundation (2004) The Right Start for America's Newborns: City and State Trends 1990-2001, Baltimore, MD: The Annie E. Casey Foundation.  
 Accessed at <http://www.aecf.org/kidscount/rightstart/>

## Raw data for birth outcome indicators - South Dakota, the Nation, and bordering states, 2000

Percent total births to teens		Percent of teen births to women who were already mothers		Percent of total births to unmarried women	
	2001		2001		2001
MN	7.9%	WY	14.3%	MN	26.3%
ND	8.9%	MT	16.2%	NE	27.7%
IA	9.6%	ND	17.6%	ND	27.9%
NE	9.7%	MN	17.7%	IA	28.8%
SD	11.1%	SD	18.1%	WY	29.6%
Nation	11.3%	IA	18.2%	MT	31.4%
MT	11.6%	NE	18.6%	Nation	33.5%
WY	12.9%	Nation	20.9%	SD	33.5%

Percent of total births to mothers with less than 12 years of education		Percent of total births to mothers receiving late or no prenatal care		Percent low birthweight babies (less than 5.5 pounds)		Percent preterm babies (less than 37 completed weeks of gestation)	
	2001		2001		2001		2001
ND	9.4%	IA	2.3%	ND	6.2%	MN	9.8%
MN	11.0%	ND	2.4%	MN	6.3%	ND	10.4%
SD	14.2%	MN	2.7%	IA	6.4%	IA	10.9%
IA	14.8%	NE	3.1%	SD	6.4%	MT	11.0%
NE	15.5%	MT	3.1%	NE	6.6%	SD	11.3%
MT	15.6%	Nation	3.7%	MT	6.9%	NE	11.4%
WY	16.1%	WY	4.0%	Nation	7.7%	Nation	11.9%
Nation	21.7%	SD	4.1%	WY	8.3%	WY	12.1%

Source: The Annie E. Casey Foundation (2004) The Right Start for America's Newborns: City and State Trends 1991-2001 Baltimore, MD: The Annie E. Casey Foundation.  
 Accessed at <http://www.aecf.org/kidscount/rightstart/>

## Data Sources

Percent of total births to teens

Sources: 1990-2001 Natality Data Set CD Series 21, numbers 2-9, 11-12, and 14, National Center for Health Statistics.

Percent of teen births to women who were already mothers

Sources: 1990-2001 Natality Data Set CD Series 21, numbers 2-9, 11-12, and 14, National Center for Health Statistics.

Percent of total births to unmarried women

Sources: 1990-2001 Natality Data Set CD Series 21, numbers 2-9, 11-12, and 14, National Center for Health Statistics. Data for Nevada for 1995 and 1996 only are from the Technical Notes in Ventura, S.J., Martin, J.A., Curtin S.C., Mathews T.J. (1998), "Births: Final data for 1997," National Vital Statistics Reports; Vol 47 no 18. Hyattsville, Maryland: National Center for Health Statistics.

Percent of total births to mothers with less than 12 years of education

Sources: 1990-2001 Natality Data Set CD Series 21, numbers 2-9, 11-12, and 14, National Center for Health Statistics.

Percent of total births to mothers receiving late or no prenatal care

Sources: 1990-2001 Natality Data Set CD Series 21, numbers 2-9, 11-12, and 14, National Center for Health Statistics.

Percent low birthweight babies (less than 5.5 pounds)

Sources: 1990-2001 Natality Data Set CD Series 21, numbers 2-9, 11-12, and 14, National Center for Health Statistics.

Percent preterm babies (less than 37 completed weeks of gestation)

Sources: 1990-2001 Natality Data Set CD Series 21, numbers 2-9, 11-12, and 14, National Center for Health Statistics

Number of births by Race and Ethnicity of Mother

Sources: 1990-2001 Natality Data Set CD Series 21, numbers 2-9, 11-12, and 14-15, National Center for Health Statistics.