



2003 South Dakota
KIDS COUNT Factbook
Indicators of Well-Being



Purpose and Goals of KIDS COUNT

Purpose

- A national and state-by-state effort
- Benchmarks of child well-being
- Secure better futures for all children

Goals

- To improve data collection
- To increase awareness
- To target specific needs and groups of children

Key Actors

Annie E. Casey Foundation

- Established in 1948
- Founder of UPS
- Foster public policies & human service reforms

South Dakota KIDS COUNT

- Began in 1993
- Part of BRB at USD
- Work with state departments and divisions



KIDS COUNT Indicators

- Demographic

- Population
- Family Profile
- Poverty Thresholds

- Health

- Infant Mortality
- Low Birth Weight
- Child and Teen deaths rate
- Births to Single Teens
- Prenatal Care
- Immunization Rates


- Education

- Enrollments
- Dropouts
- Special Needs

- Economic



- Poverty Statistics
- TANF/Foodstamps
- Child care
- Per Capita Personal Income
- Women in the Workforce

- Safety

- Juvenile Justice Statistics
 - Youth Related Traffic Data
 - Child Abuse & Neglect Data
 - Juvenile Drug and Alcohol Data
 - Youth Tobacco Survey
 - Youth Risk Behavior Survey Data
- 



How to use the Factbook

- ➊ Information to write grants; needs assessments
 - ➋ Problem solving - identify strengths/weaknesses and look at options
 - ➌ Policy
 - ➍ Advocacy
 - ➎ Planning and setting priorities
- 
- 



Cautions When Using The Data

- No data are perfect
- Fluctuations in small number of events
- Numbers, percents, and time

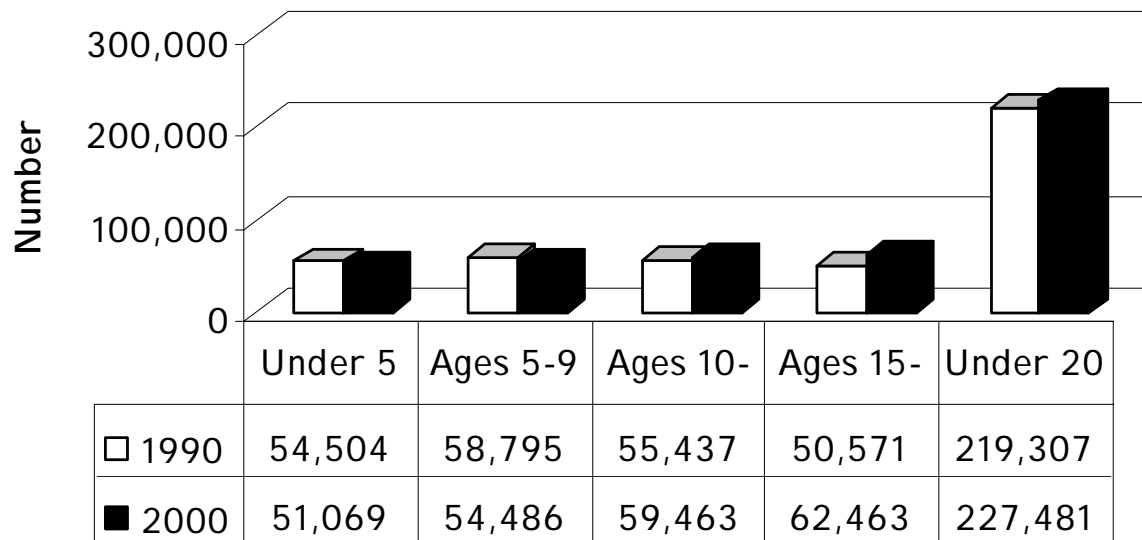


Demographic Indicators



Age Groupings In South Dakota 1990 and 2000

Age groupings in South Dakota 1990 and 2000



American Indian Demographic Data 2000

2000 Census	All Reservations	Cheyenne River	Crow Creek	Flandreau	Lake Traverse	Lower Brule	Pine Ridge	Rosebud	Standing Rock	Yankton
Population	59,355	8,470	2,225	408	10,217	1,353	15,507	10,469	4,206	6,500
Male	29,495	4,151	1,152	202	5,084	660	7,745	5,190	2,124	3,187
Female	29,860	4,319	1,073	206	5,133	693	7,762	5,279	2,082	3,313
Population under 5	6,001	820	255	41	726	181	1,688	1,267	380	643
Population Ages 5-9	6,669	920	258	57	870	179	1,988	1,327	461	609
Population Ages 10-14	6,942	999	268	44	963	147	2,127	1,320	458	616
Population Ages 15-19	6,046	900	260	34	896	140	1,801	1,101	387	527
Population under 20	25,658	3,639	1,041	176	3,455	647	7,604	5,015	1,686	2,395
Total Households	17,117	2,597	551	130	3,692	356	3,493	2,804	1,280	2,214
Married couple families with children	3,917	643	125	28	851	68	823	594	301	484
Male headed families w/children	970	146	40	13	139	31	253	217	51	80
Female headed families w/children	2,557	375	110	28	281	89	736	571	137	230

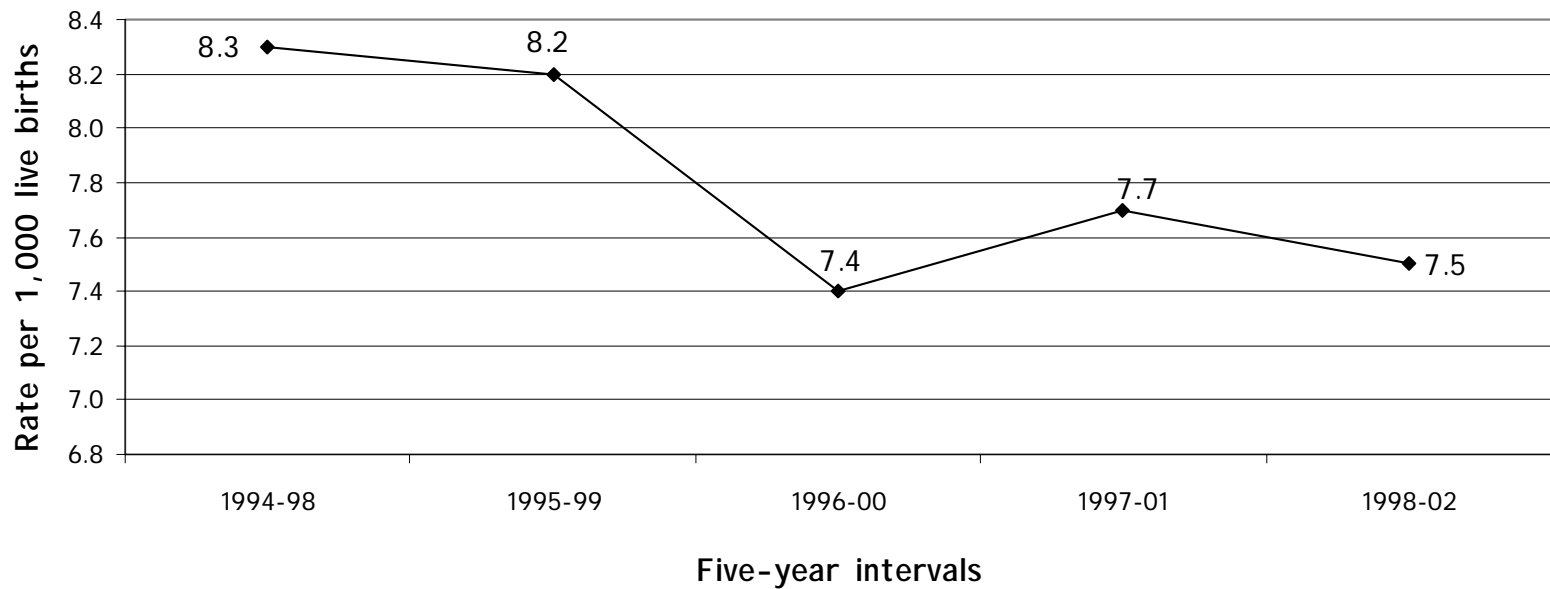


Health Indicators



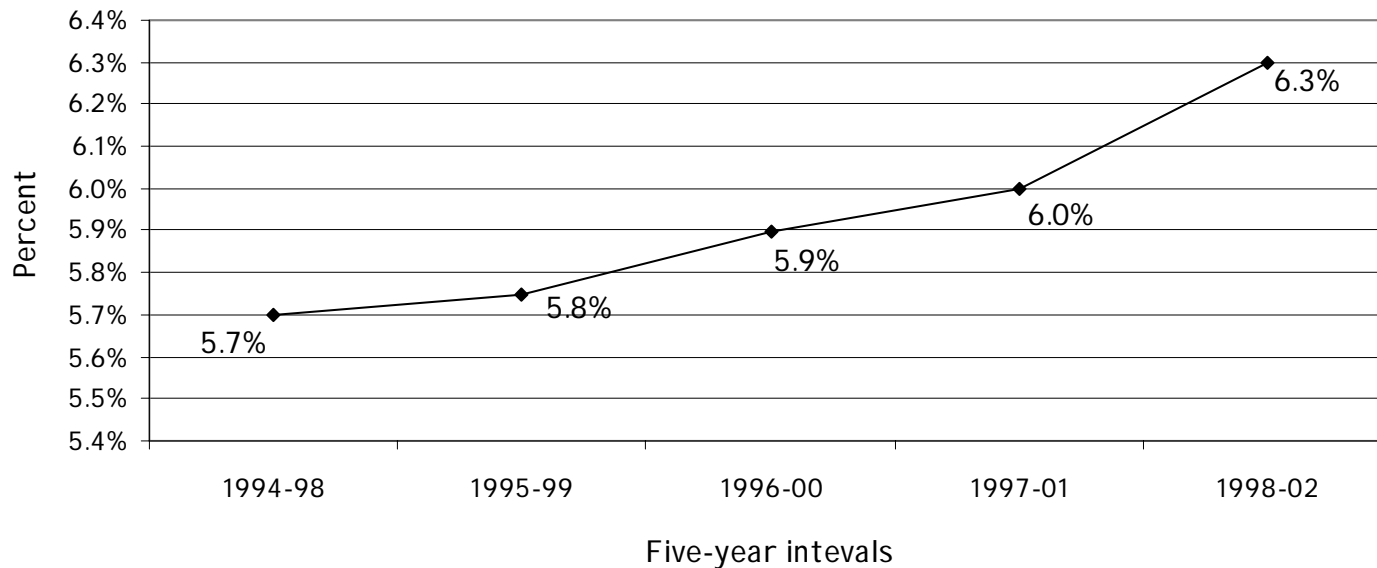
Infant Mortality [per 1,000 live births]

Rates for infant mortality for five year intervals
1994-98 through 1998-02



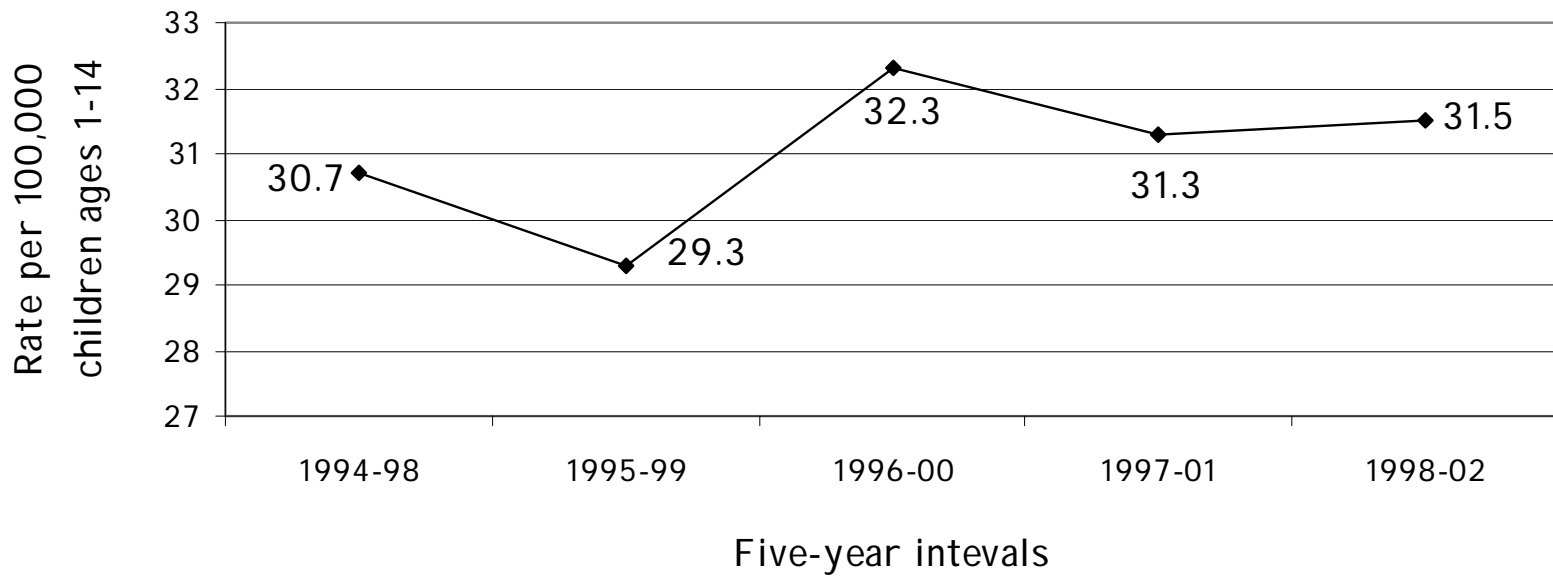
Low Birthweight Babies [less than 2,500 grams]

Percentage of low birth weight babies for five-year intervals
1994-98 through 1998-02



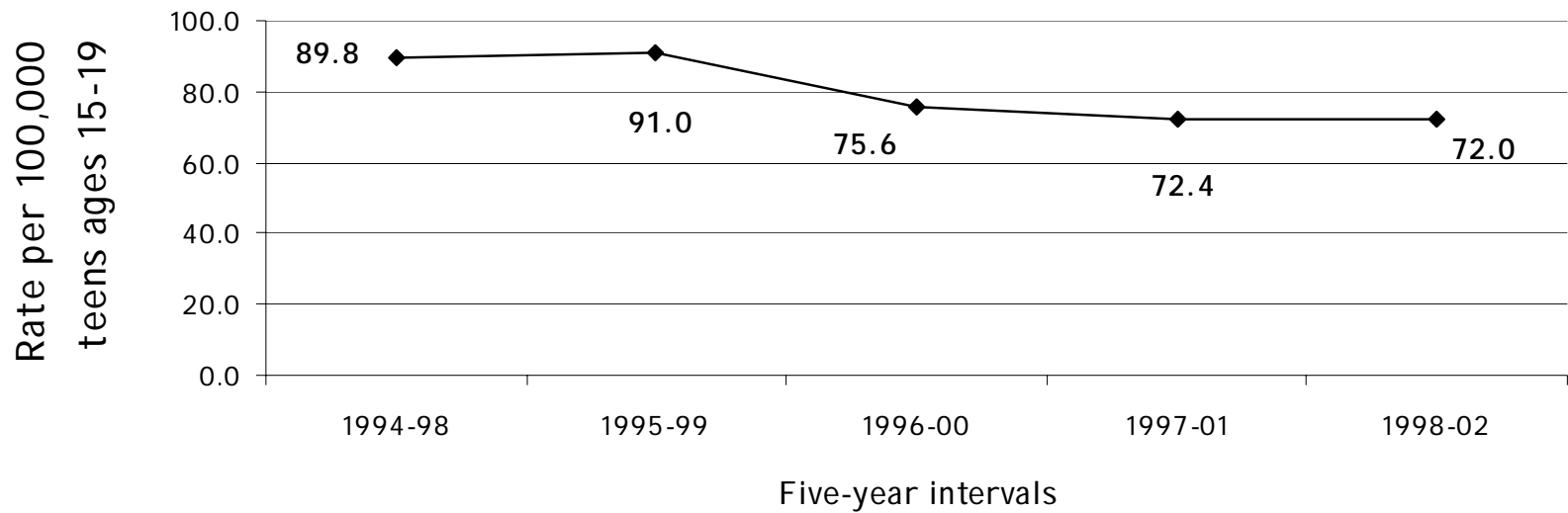
Child Deaths [per 100,000 ages 1 - 14]

Rates for child deaths for five-year intervals
1994-98 through 1998-02



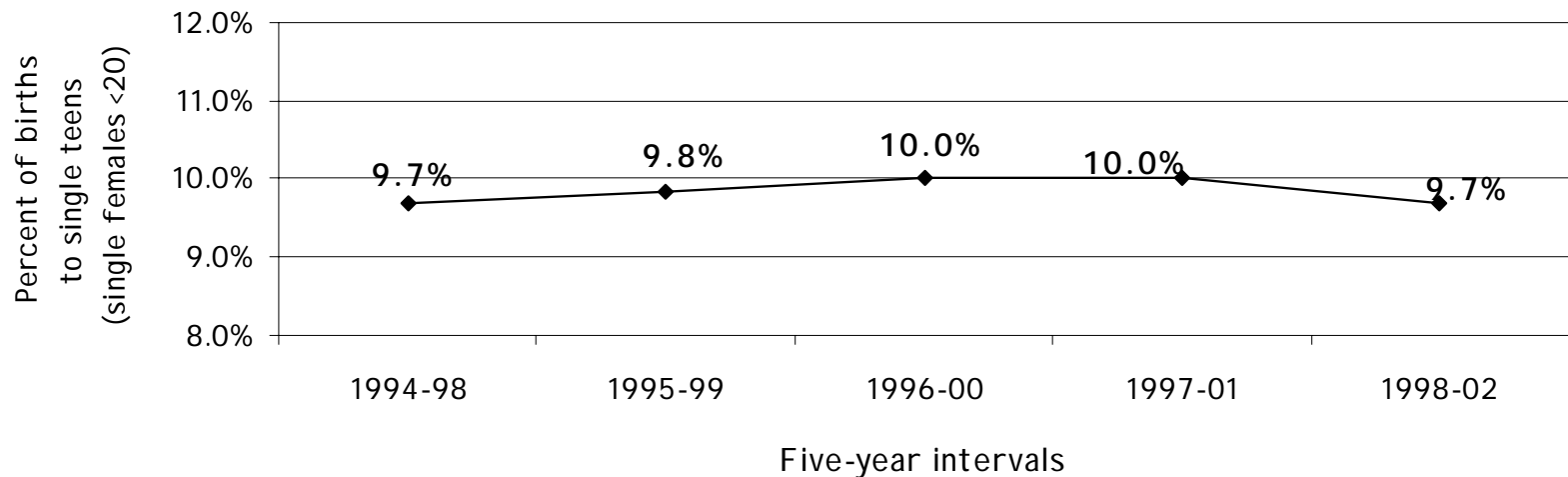
Teen Violent Death [per 100,000 ages 15-19]

Rates for teen violent deaths for five-year intervals
1994-98 through 1998-02



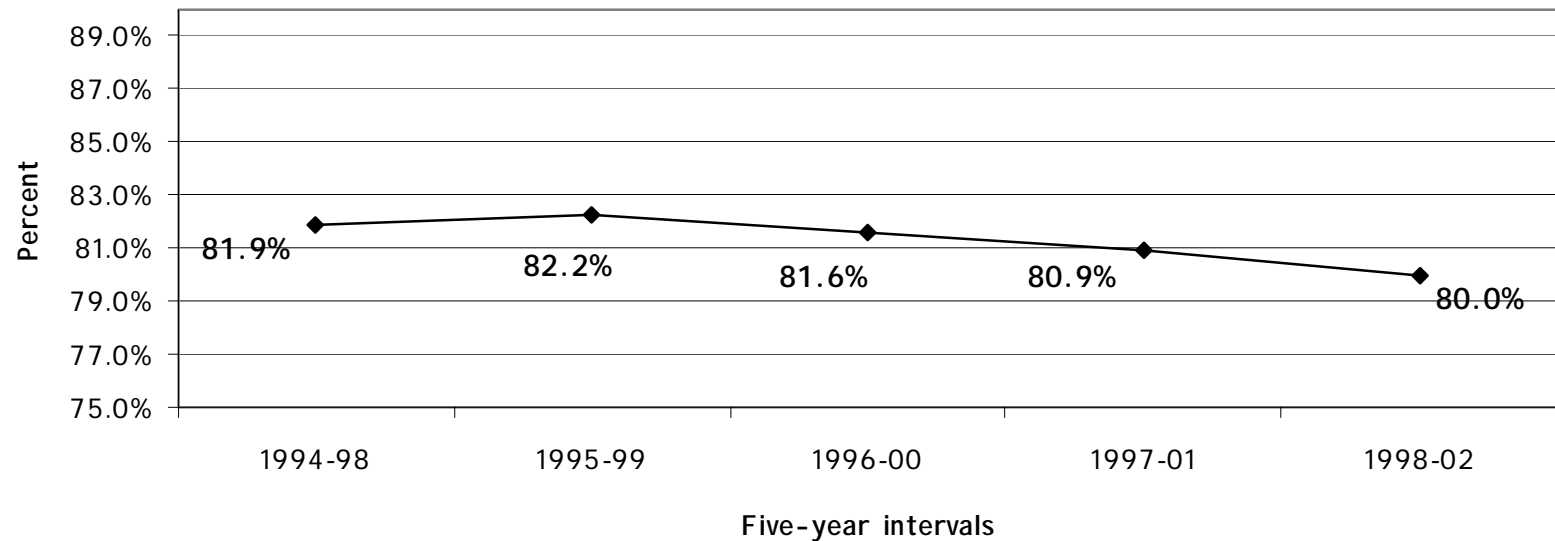
Births to Single Teens Age <20

Percentage for births to single teens (single females <20)
for five-year intervals 1994-98 through 1998-02



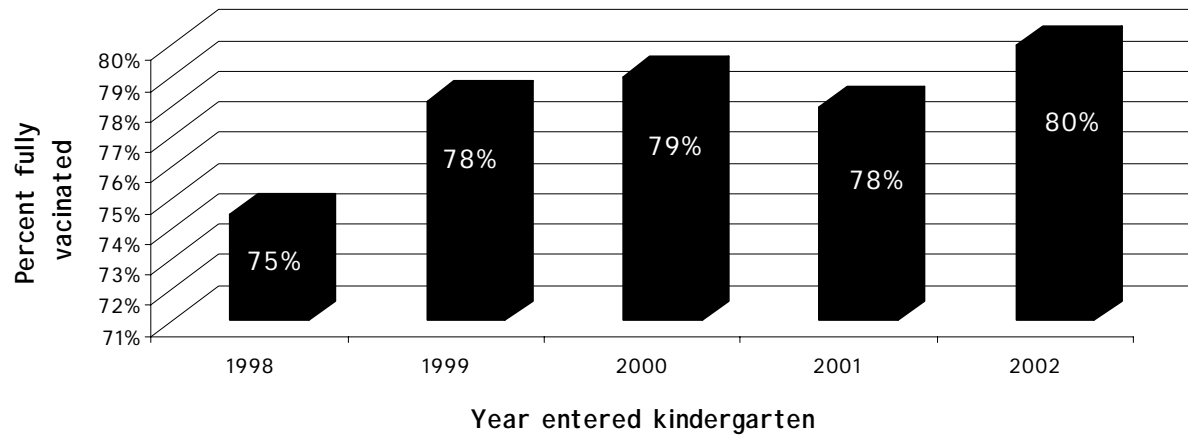
Women Receiving Prenatal Care (during first trimester)

Percentage for first trimester prenatal care
for five-year intervals 1994-98 through 1998-02



Immunization Level

Retrospective 2 year old immunization level
by school year



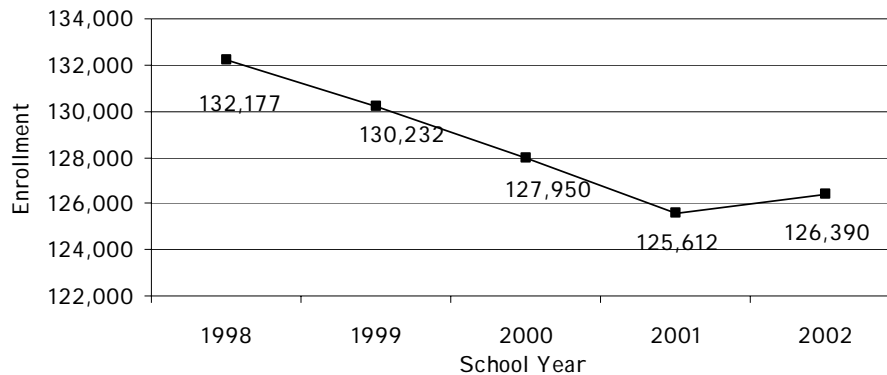


Education Indicators

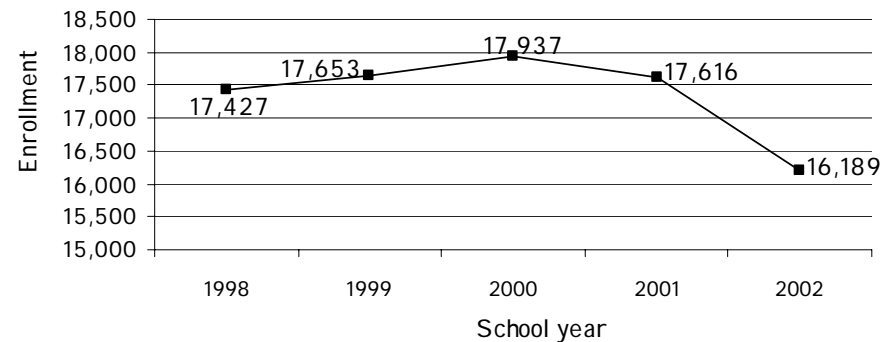


Enrollment Figures

Public school enrollment by school year

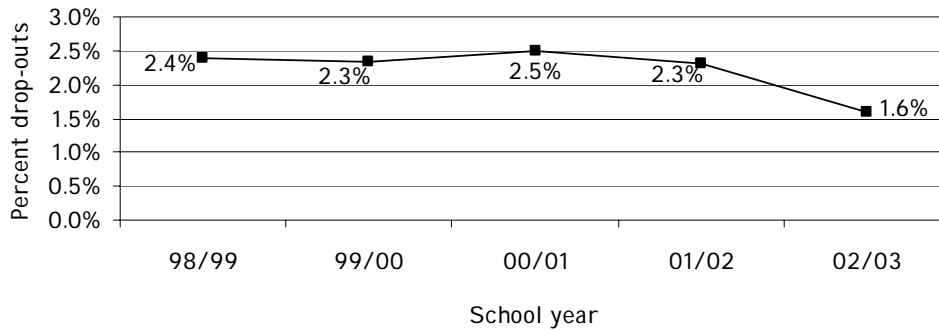


Non-public school enrollments by school year

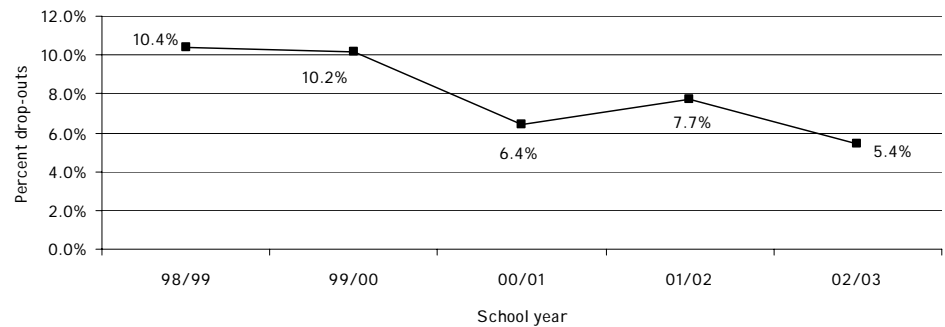


Dropout Figures

Percent public school drop-outs by school year



Percent non-public school drop-outs by school year



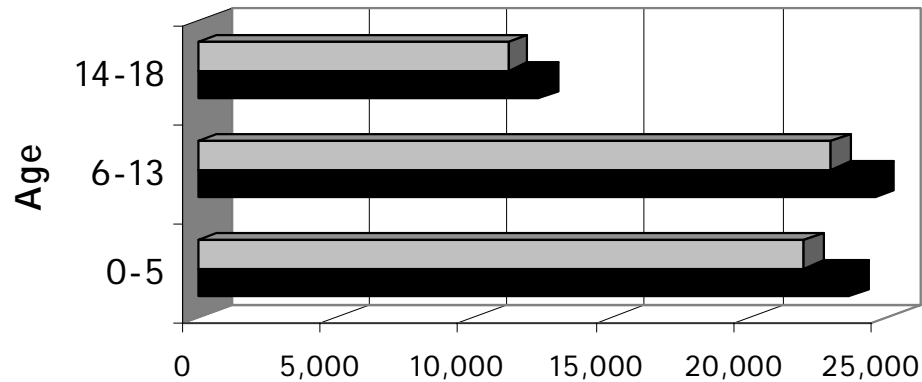


Economic Indicators



Medicaid Participation

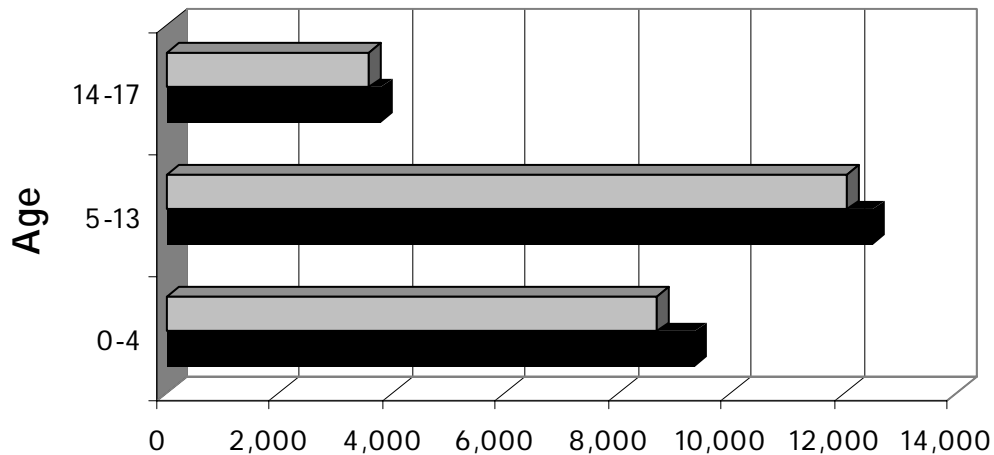
Medicaid participation by age group
by state fiscal year



	0-5	6-13	14-18
■ State FY '02	22,034	23,020	11,265
■ State FY '03	23,635	24,590	12,392

Foodstamp Participation

Foodstamp participation by age group
by state fiscal year



	0-4	5-13	14-17
State FY '02	8,701	12,067	3,593
State FY '03	9,363	12,535	3,796

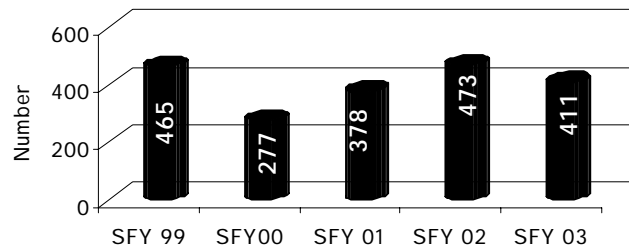


Safety Indicators

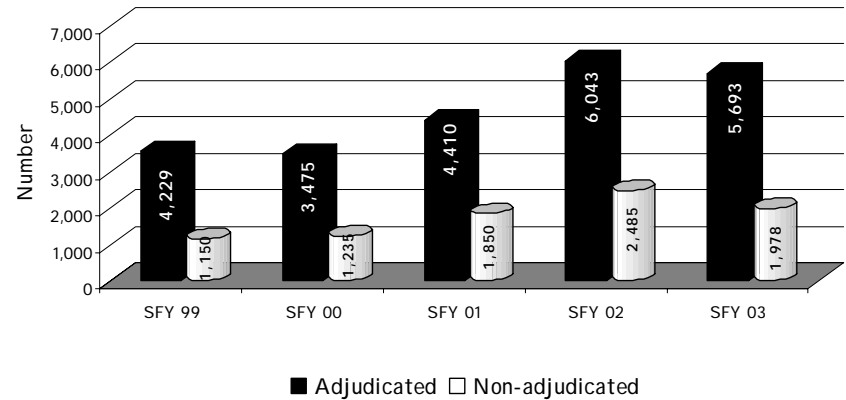


Juvenile Justice

Juvenile commitments to the Department of Corrections by state fiscal year (SFY)

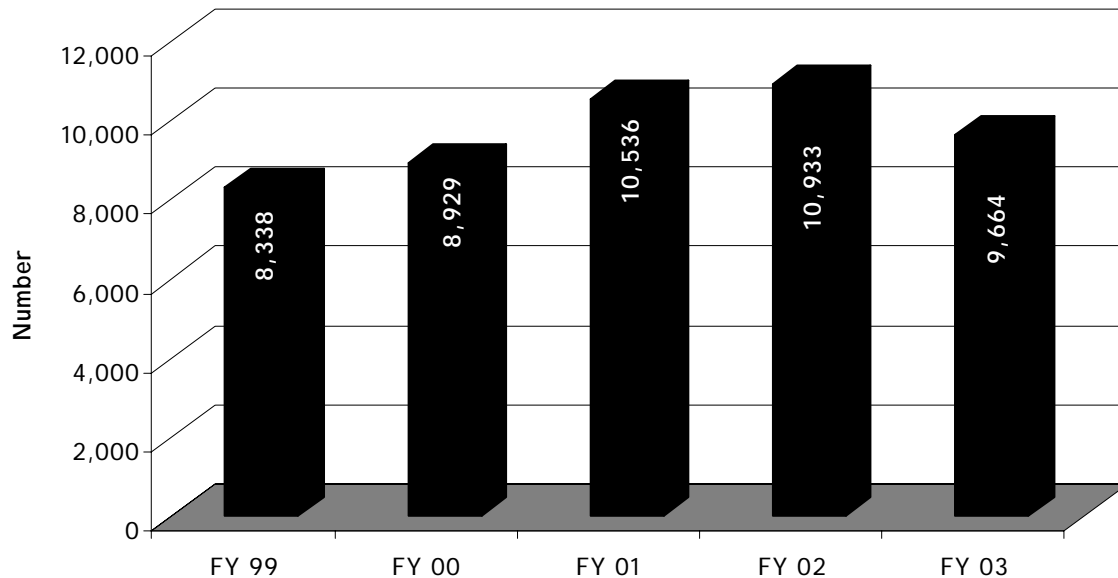


Juvenile adjudicated or non-adjudicated actions by state fiscal year (SFY)

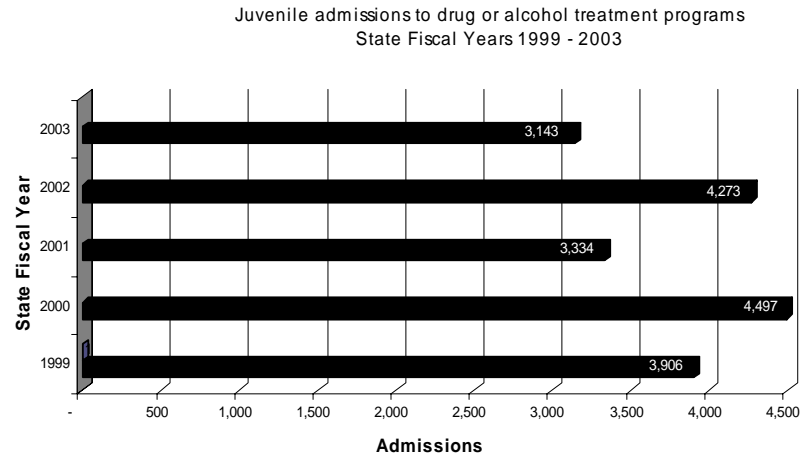
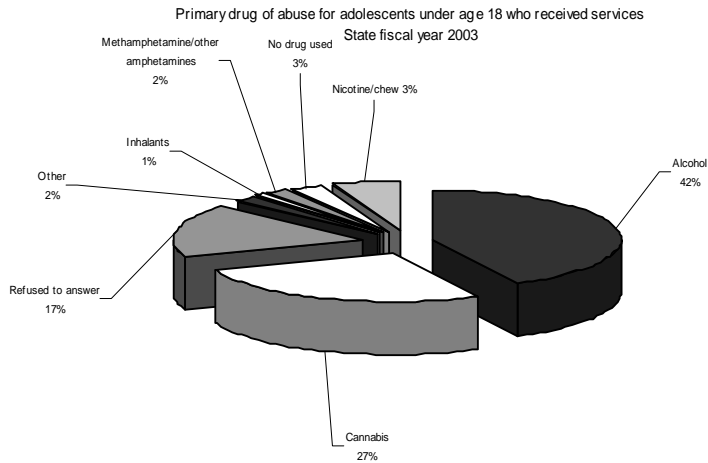


Child Abuse and Neglect

Child abuse & neglect initial family assessments
by state fiscal year



Juvenile Drug and Alcohol





Youth Risk Behavior Survey



Behaviors that result in intentional & unintentional injuries

	South Dakota	The Nation
Rarely or never wore a seatbelt when riding in a car driven by someone else	27.4%	14.1%
Rarely or never wore a bicycle helmet	93.1%	84.7%
During the past 30 days, rode in a car or vehicle driven by someone who had been drinking alcohol	38.1%	30.7%
During the past 30 days, drove a car or vehicle when they had been drinking	21.9%	13.3%
Carried a weapon on school property during the past 30 days	7.5%	6.4%
Were in a physical fight one or more times during the past 12 mos.	30.8%	33.2%
Seriously considered attempting suicide during the past 12 mos.	19.3%	19.0%
Attempted suicide during the past 12 mos.	13.1%	8.8%

Sexual Behaviors

	South Dakota	The Nation
Ever had sexual intercourse	40.0%	45.6%
Had sexual intercourse prior to age 13	3.5%	6.6%
Had sexual intercourse with four or more people during their life	11.5%	14.2%
Drank alcohol or used drugs before last sexual intercourse	28.5%	25.6%
Used or whose partner used a condom during last sexual intercourse	57.9%	58.3%
Have been pregnant or have gotten someone pregnant	3.8%	4.7%
Have been taught about AIDS/HIV infection in school	87.0%	89.0%

Dietary Behaviors

	South Dakota	The Nation
Are trying to lose weight	46.3%	46.0%
Vomited or took laxatives to lose weight or keep from gaining weight during the past 30 days	6.3%	5.4%
Are at risk for becoming overweight	12.7%	13.6%
Are overweight	7.6%	10.5%
Drank 3 or more glasses of milk per day during the past 7 days	24.7%	16.4%

Physical Activity

	South Dakota	The Nation
Did exercises to strengthen or tone their muscles during 3 or more of past 7 days	51.6%	53.4%
Go to physical education class 1 or more days in an average school week	22.1%	51.7%
Exercised or participated in physical activities for at least 20 minutes that made them sweat and breathe hard on 3 or more of the past 7 days	58.0%	64.6%
Participated in physical activities that did not make them sweat or breathe hard for at least 30 minutes on 5 or more of the past 7 days	24.8%	25.5%
Played on one or more sports teams during the past 12 months	63.7%	55.2%

Tobacco Use

	South Dakota	The Nation
Ever tried cigarette smoking	67.4%	63.9%
Smoked whole cigarette prior to age 13	25.8%	22.1%
Smoked cigarettes one or more of the past 30 days	33.1%	28.5%
Are smokers who tried to quit smoking during the past 12 months	64.2%	57.4%
Used chewing tobacco or snuff during past 30 days	15.1%	8.2%
Smoked cigars, cigarillos, or little cigars on one or more of the past 30 days	14.3%	15.2%

Alcohol and Other Drug Use

	South Dakota	The Nation
Had at least one drink of alcohol on one or more days during their life	81.5%	78.2%
Drank alcohol other than a few sips prior to age 13	31.6%	29.1%
Had at least 1 drink of alcohol during past 30 days	50.2%	47.1%
Had 5 or more drinks of alcohol in a row during the past 30 days	36.5%	29.9%
Used marijuana one or more times during their life	36.3%	42.4%
Used marijuana during the past 30 days	18.4%	23.9%
Used any form of cocaine during their life	7.6%	9.4%
Used methamphetamines one or more times during their life	8.3%	9.8%
Ever injected any illegal drugs during their life	6.9%	2.3%
Ever sniffed glue or inhaled spray from cans	15.2%	14.7%